

200 nm



Mag = 16.00 K X

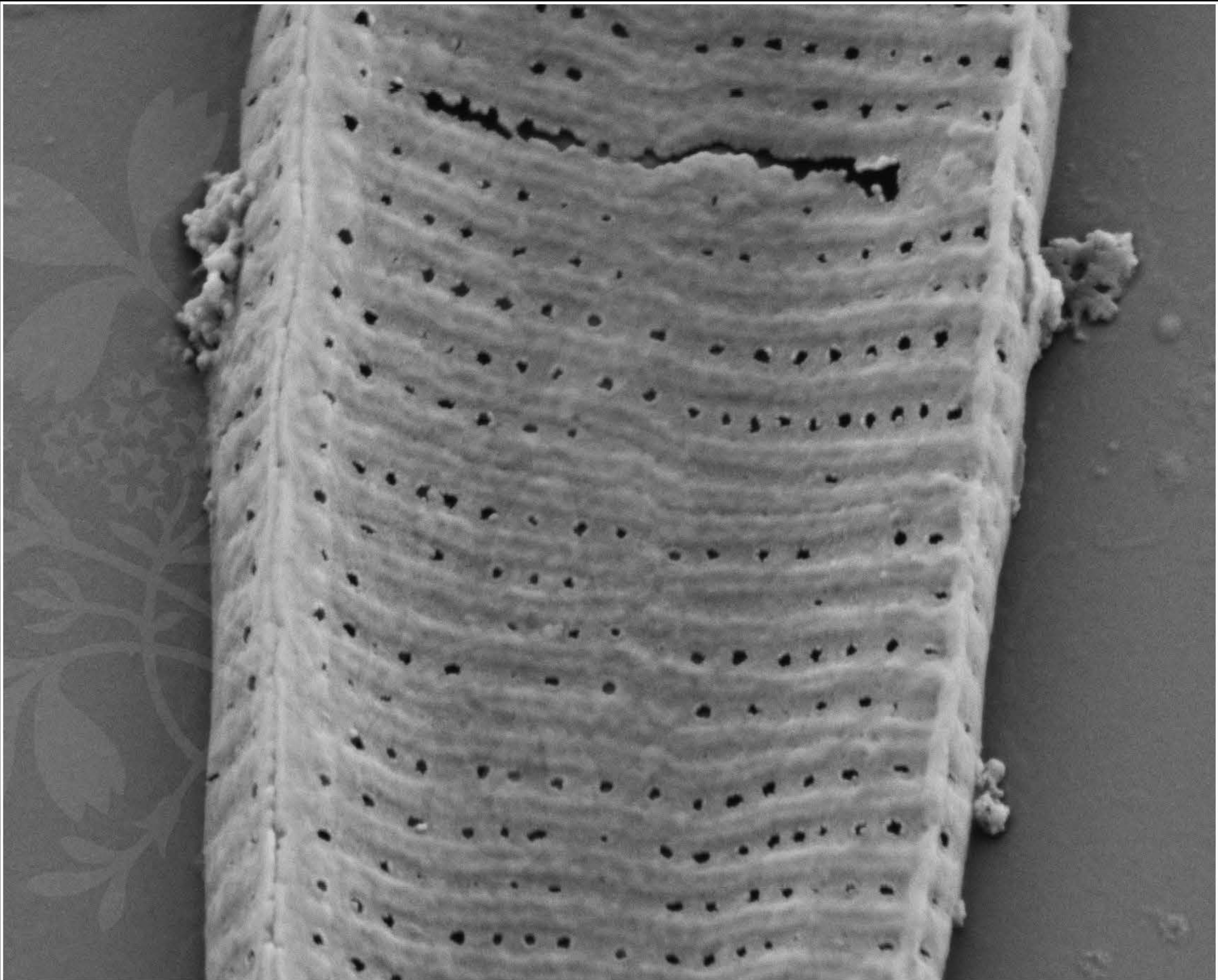
EHT = 5.00 kV

Signal A = SE2 Date : 3 Mar 2020

WD = 5.1 mm

File Name = JapanD_01.tif





100 nm
H

Mag = 20.00 K X

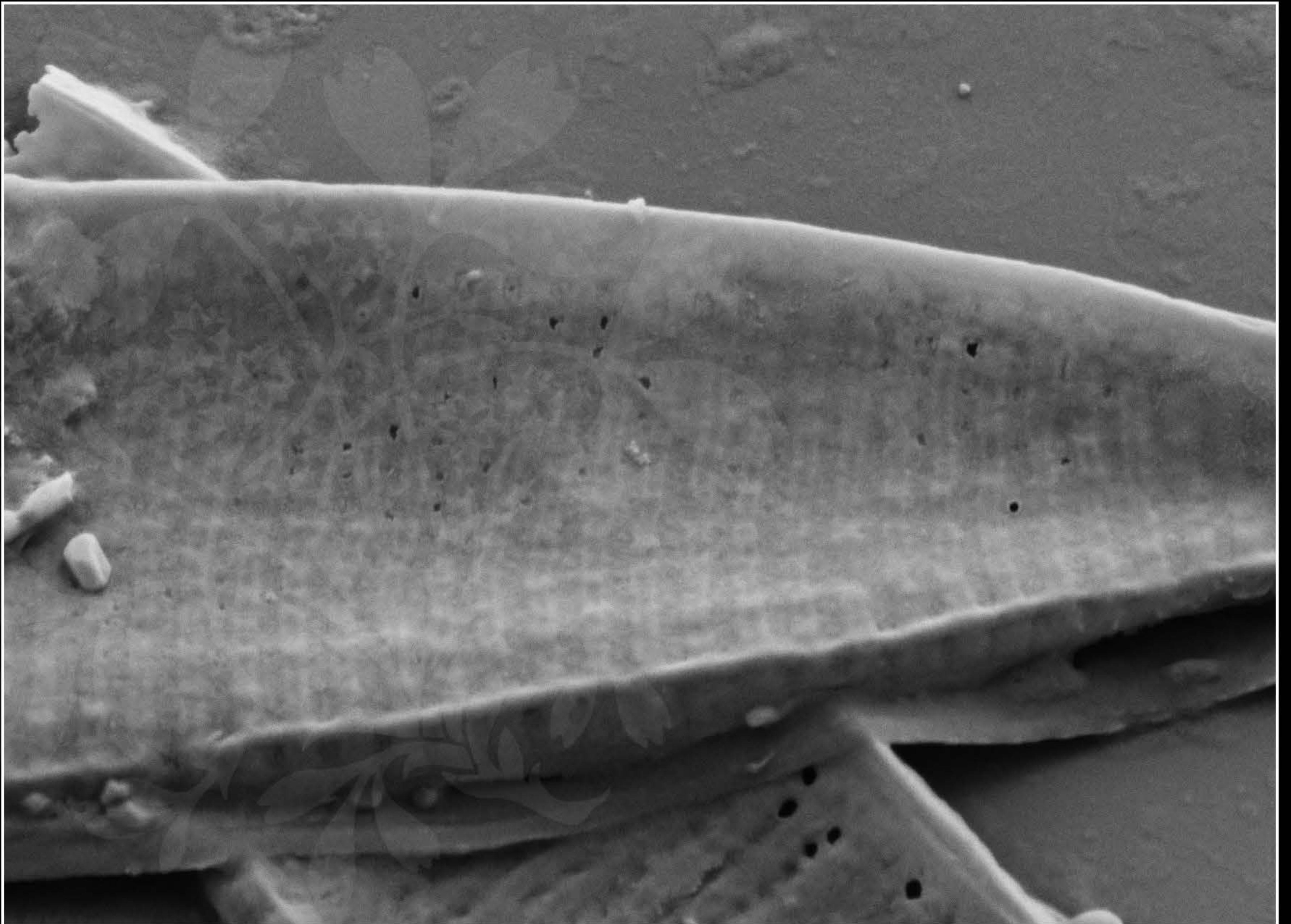
EHT = 5.00 kV

Signal A = SE2 Date : 3 Mar 2020

WD = 5.1 mm

File Name = JapanD_02.tif





200 nm
┆

Mag = 16.00 K X

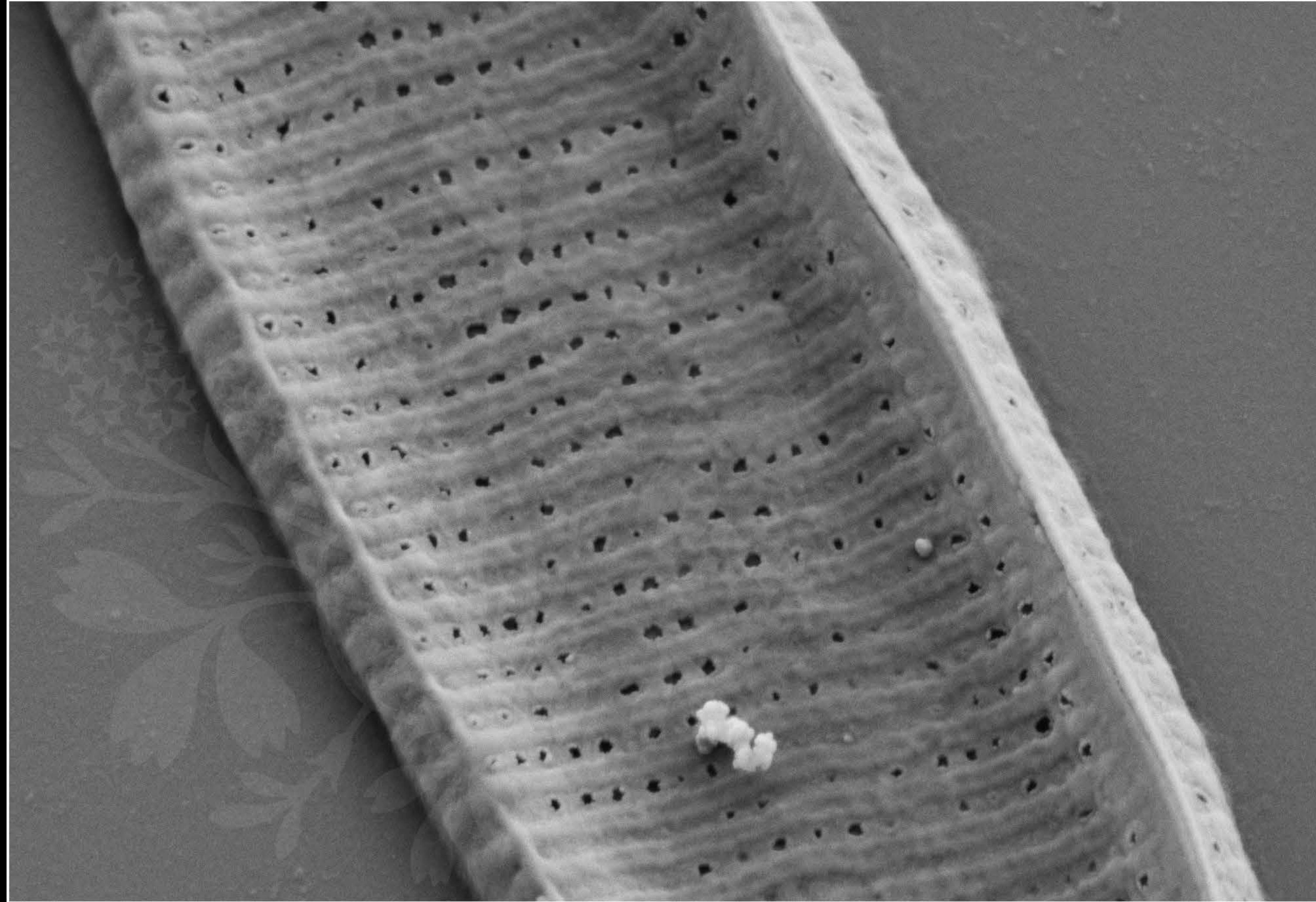
EHT = 5.00 kV

Signal A = SE2 Date : 3 Mar 2020

WD = 5.1 mm

File Name = JapanD_03.tif





100 nm

H

Mag = 20.00 K X

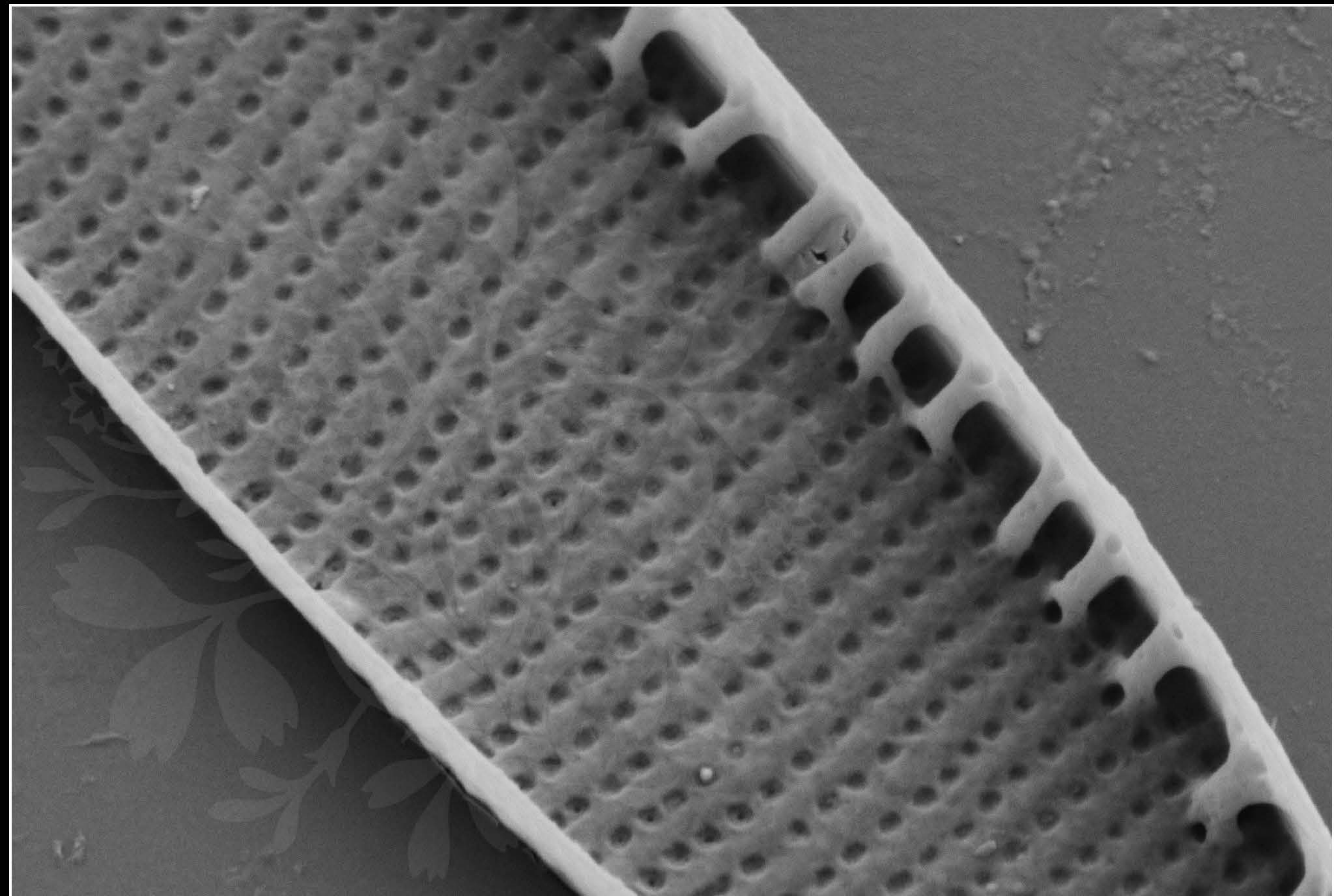
EHT = 5.00 kV

Signal A = SE2 Date : 3 Mar 2020

WD = 5.1 mm

File Name = JapanD_04.tif





100 nm

H

Mag = 20.00 K X

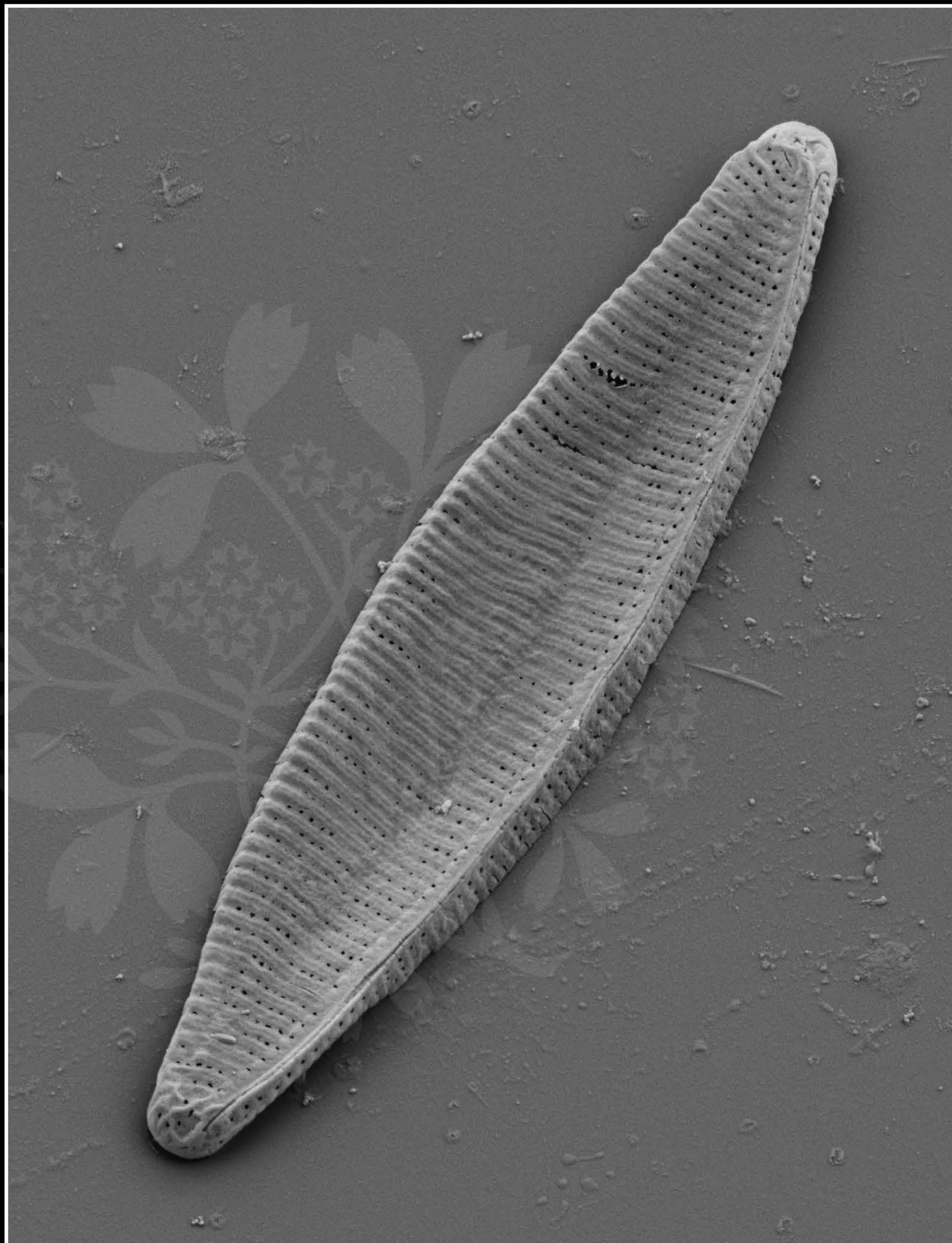
EHT = 5.00 kV

Signal A = SE2 Date : 3 Mar 2020

WD = 5.1 mm

File Name = JapanD_05.tif





1 μ m
┌───┐
└───┘

Mag = 5.00 K X

EHT = 5.00 kV

Signal A = SE2 Date : 3 Mar 2020

WD = 5.1 mm

File Name = JapanD_06.tif

