

100 nm
H

Mag = 20.00 K X

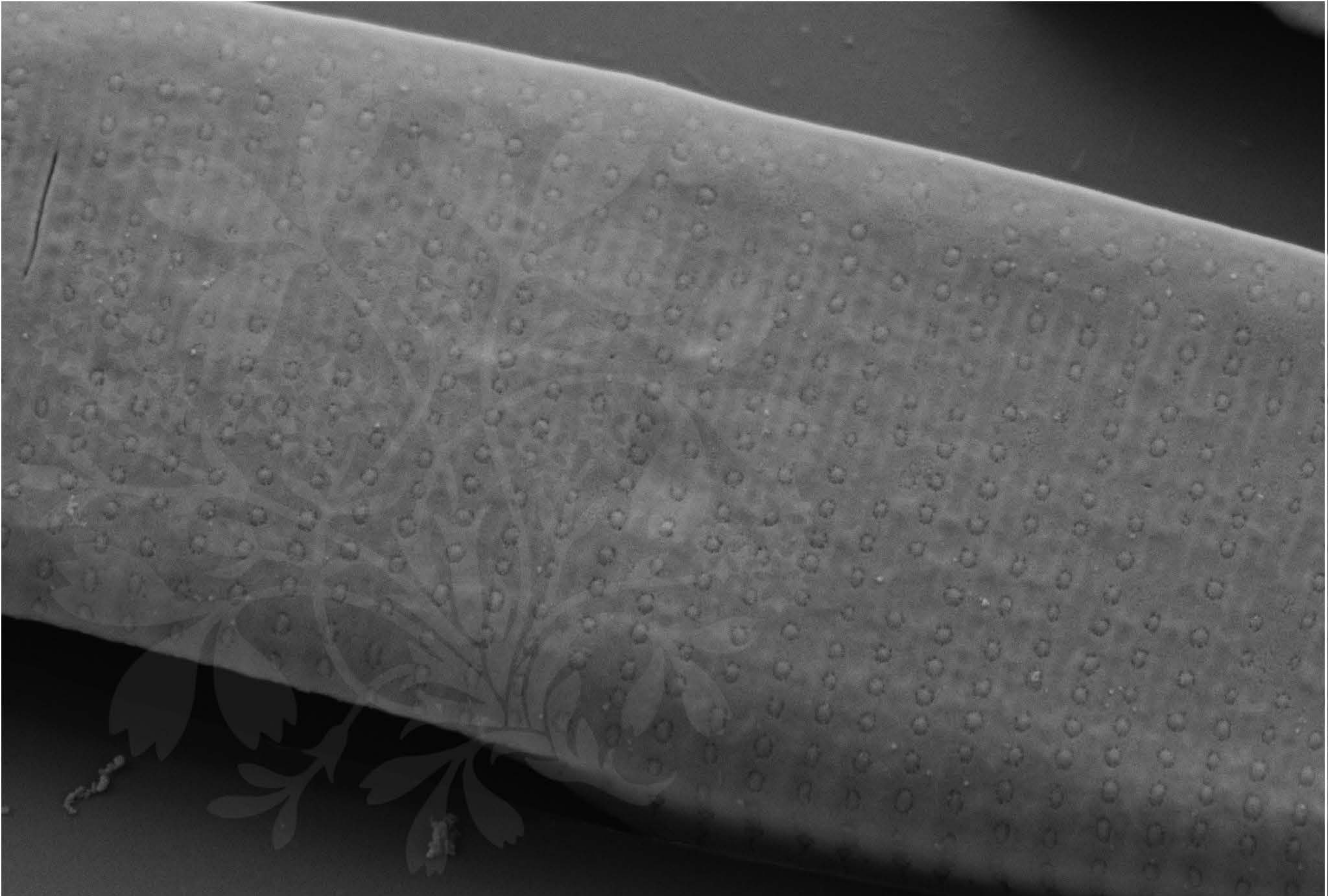
EHT = 5.00 kV

Signal A = SE2 Date :26 Feb 2020

WD = 4.3 mm

File Name = JapanF_01.tif





200 nm
┆

Mag = 16.00 K X

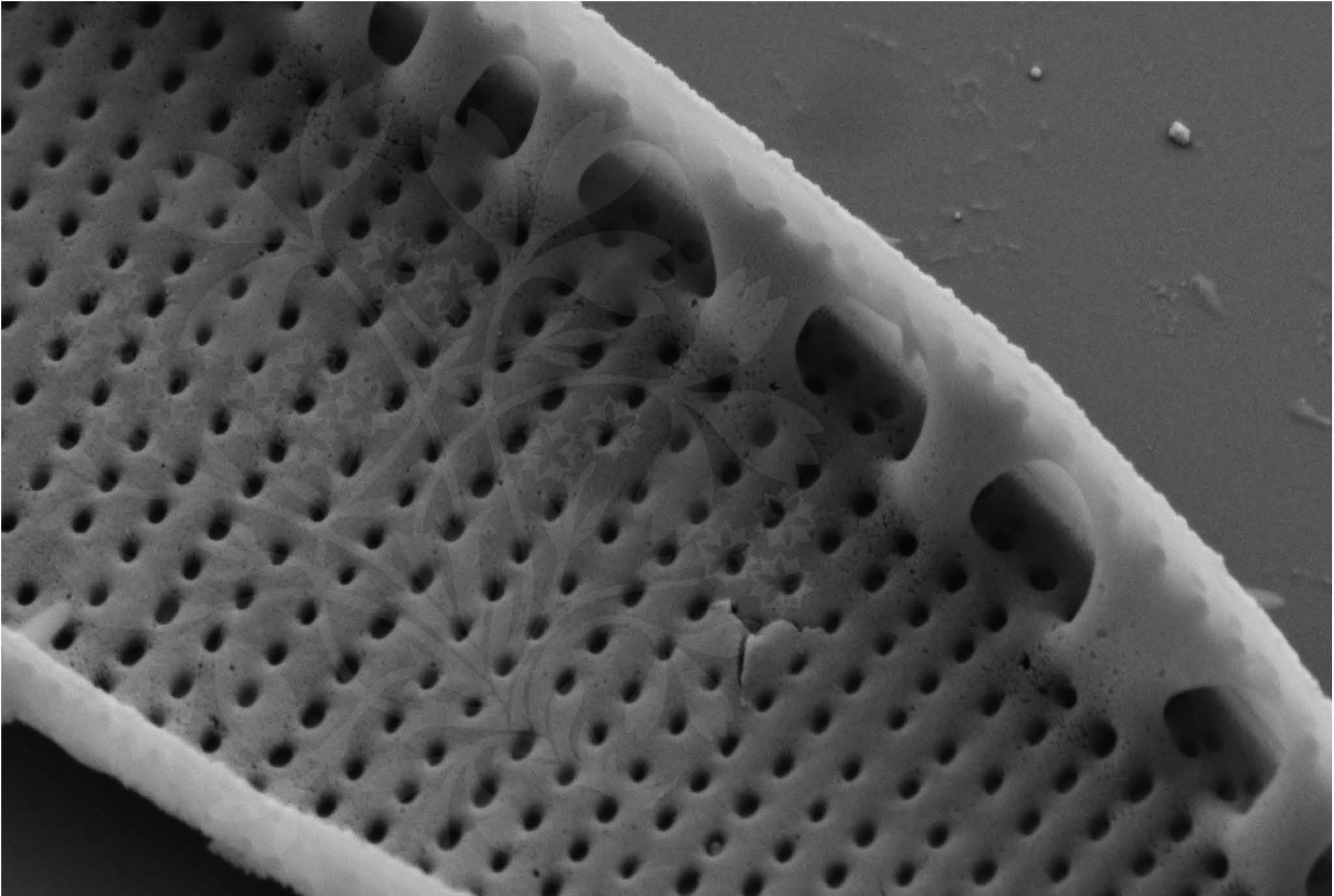
EHT = 5.00 kV

Signal A = SE2 Date :26 Feb 2020

WD = 4.3 mm

File Name = JapanF_02.tif





100 nm

H

Mag = 20.00 K X

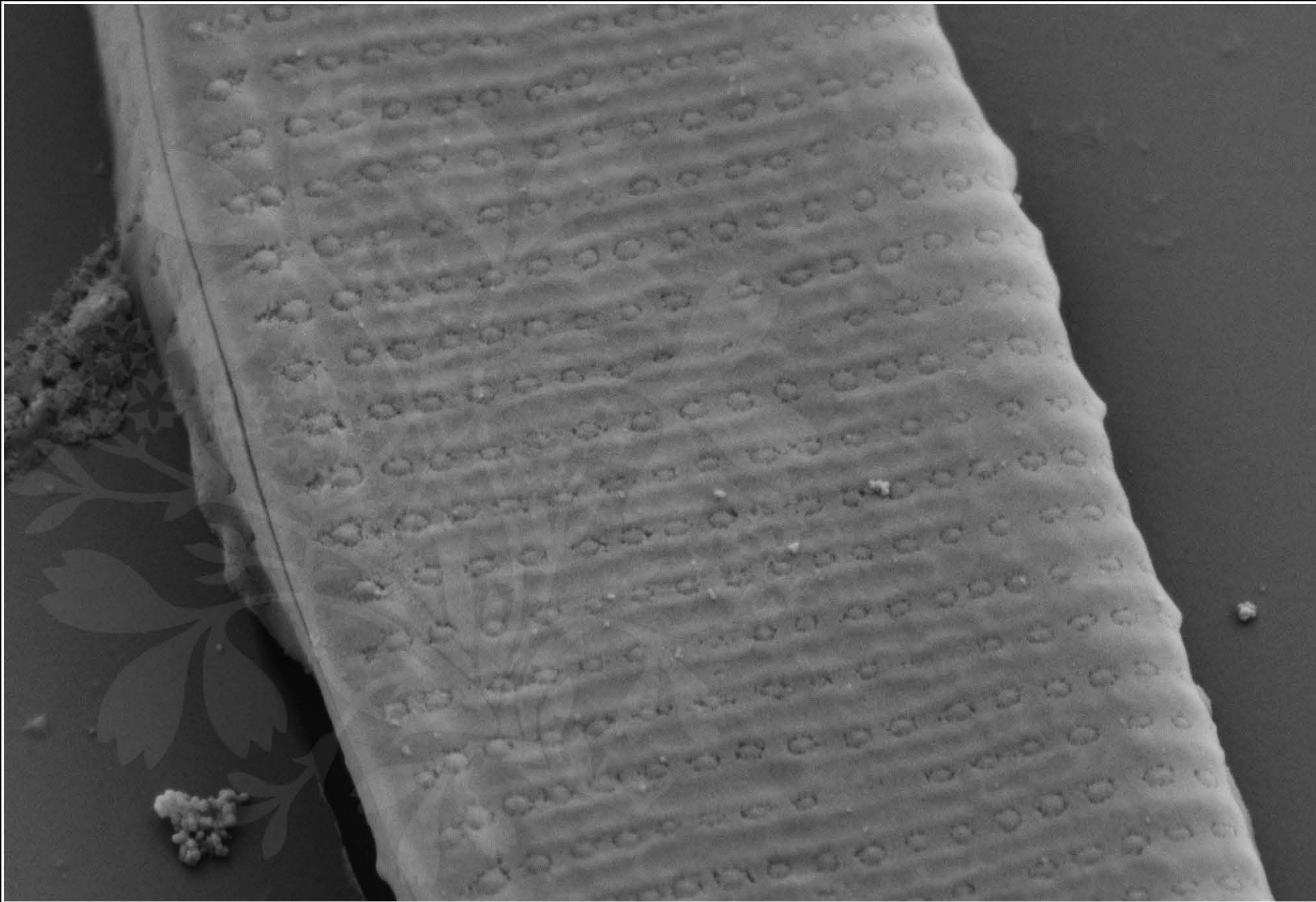
EHT = 5.00 kV

Signal A = SE2 Date :26 Feb 2020

WD = 4.3 mm

File Name = JapanF_03.tif





100 nm

H

Mag = 20.00 K X

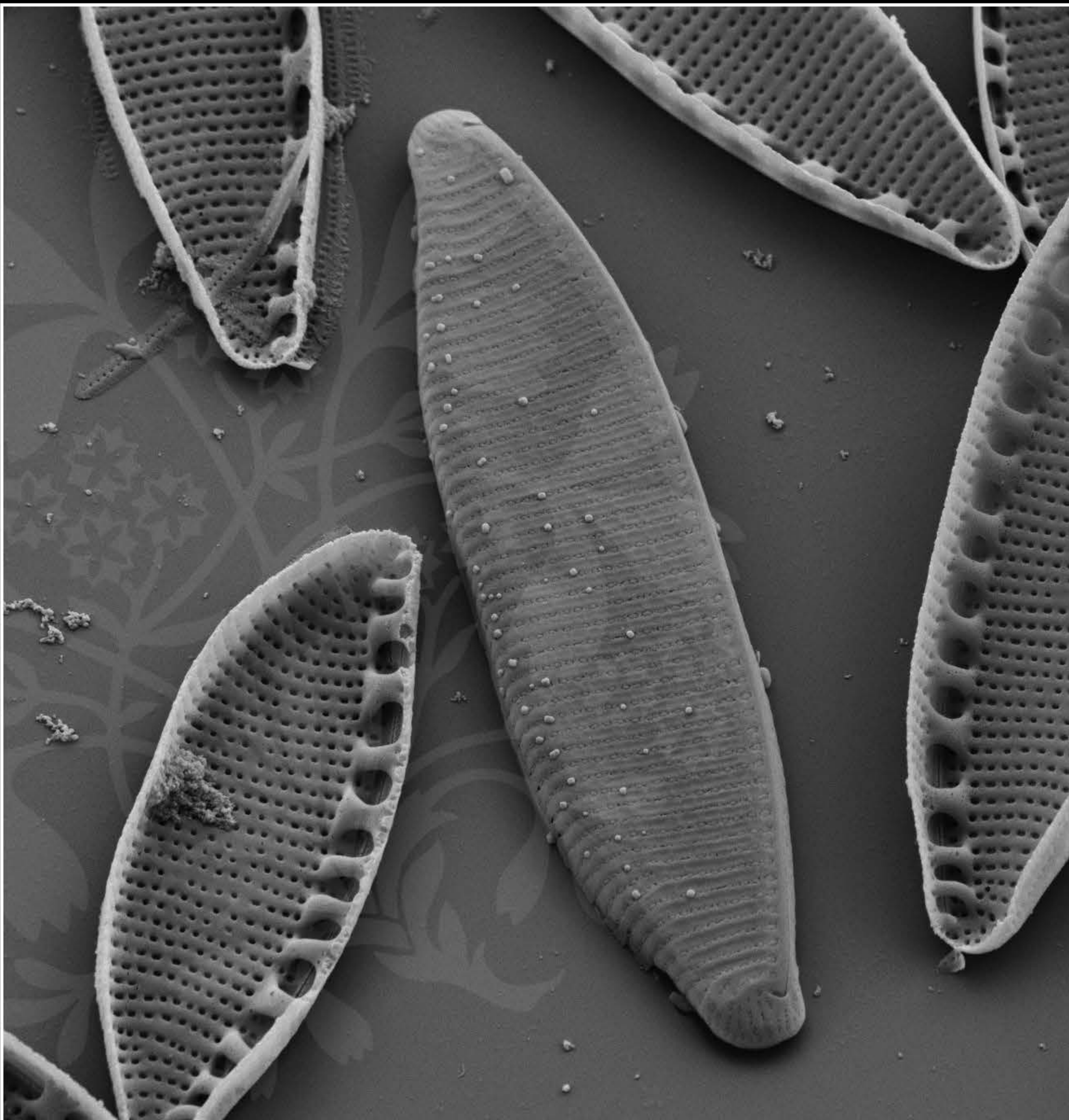
EHT = 5.00 kV

Signal A = SE2 Date :26 Feb 2020

WD = 4.3 mm

File Name = JapanF_04.tif





1 μ m
|

Mag = 4.50 K X

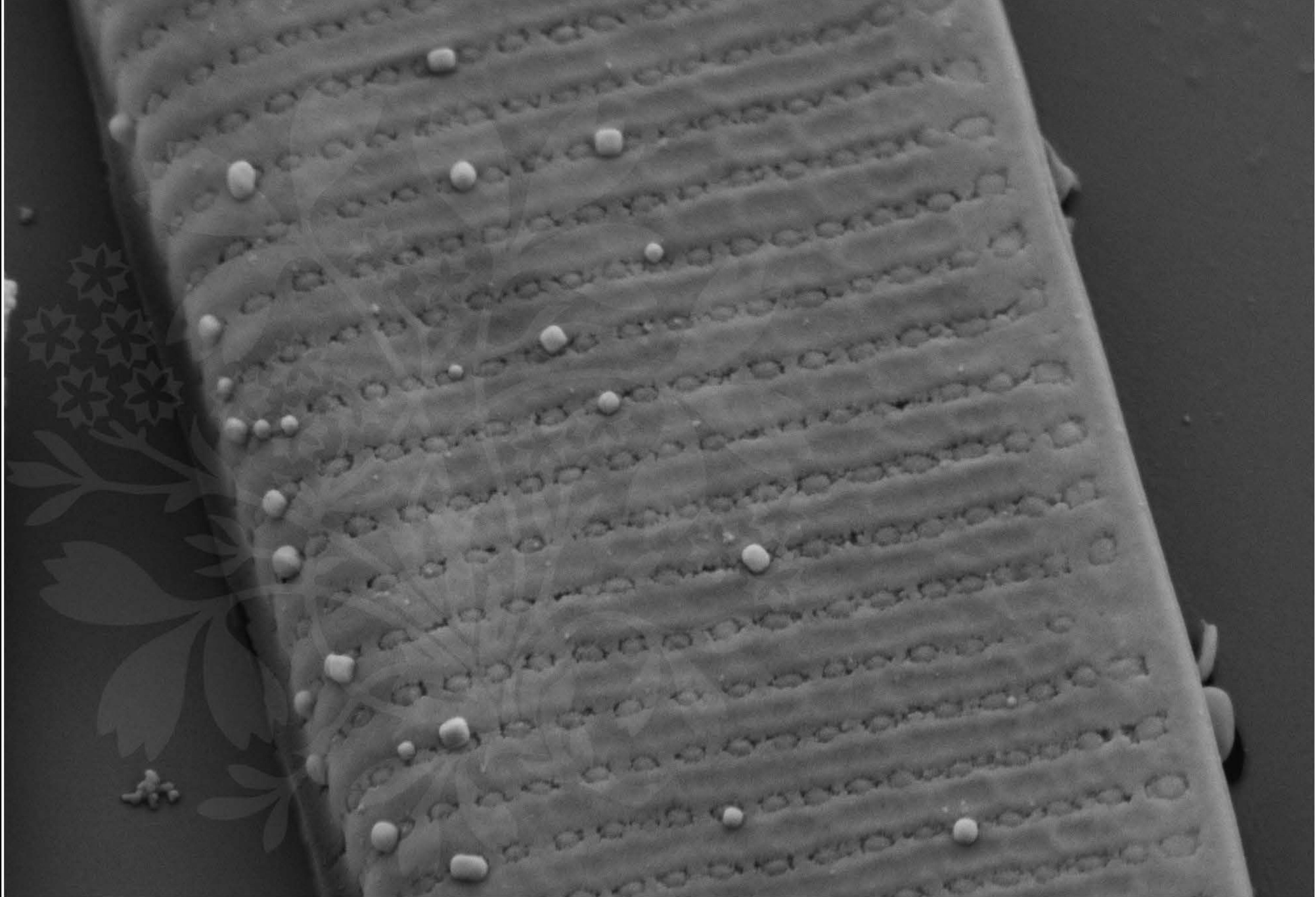
EHT = 5.00 kV

Signal A = SE2 Date :26 Feb 2020

WD = 4.3 mm

File Name = JapanF_05.tif





200 nm
┌───┐

Mag = 20.00 K X

EHT = 5.00 kV

Signal A = SE2 Date :26 Feb 2020

WD = 4.3 mm

File Name = JapanF_06.tif

