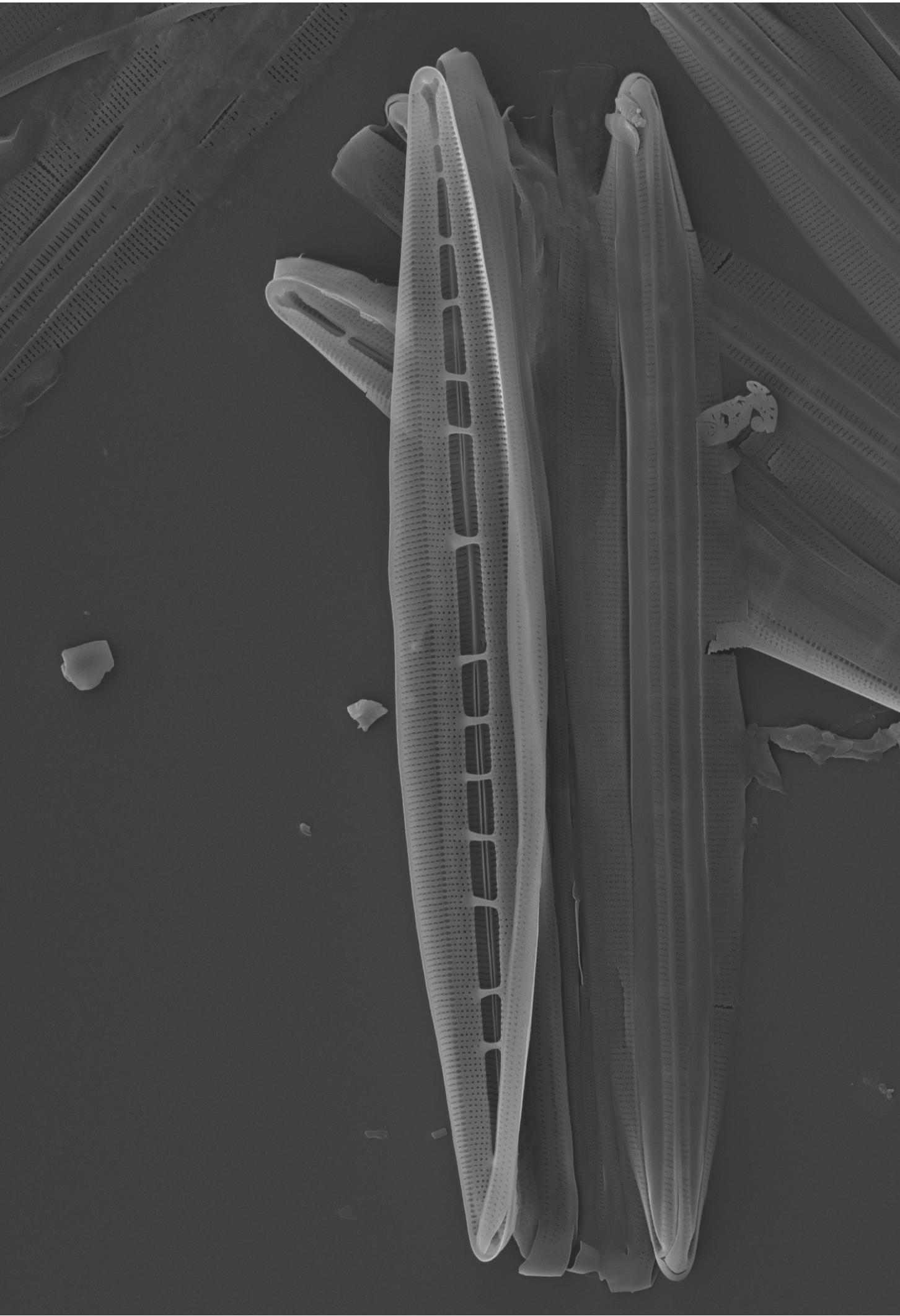


1 μm

EHT = 7.00 kV
WD = 21.4 mm

Signal A = SE2
Mag = 23.04 K X

Date : 12 Apr 2014



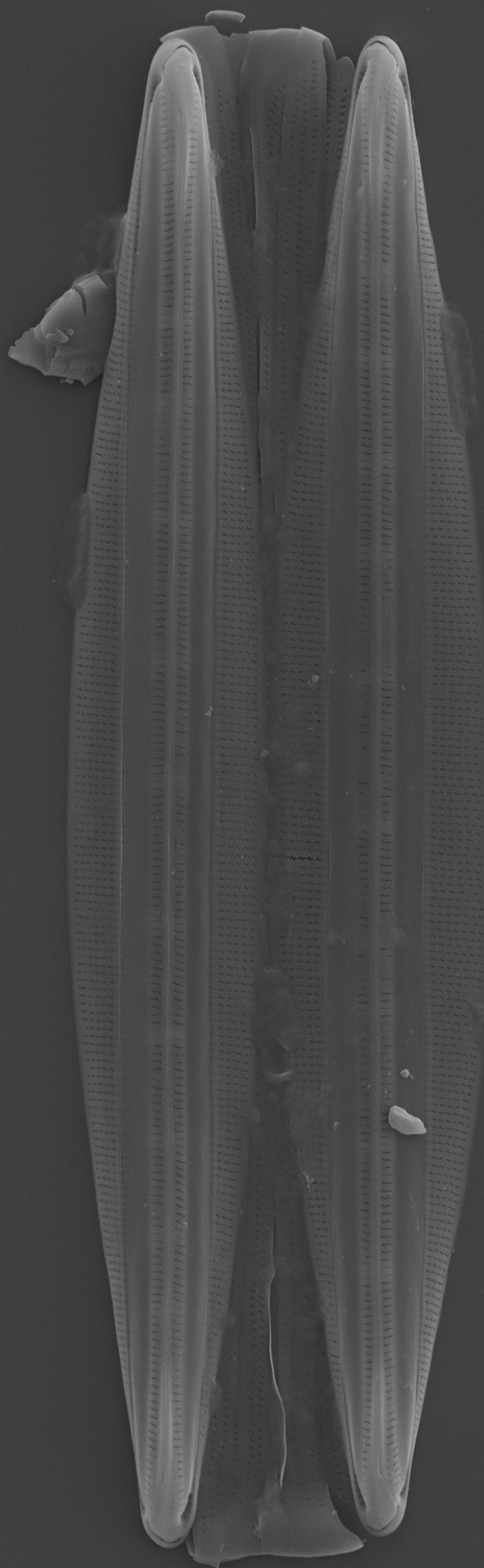
1 μ m



EHT = 7.00 kV
WD = 21.4 mm

Signal A = SE2
Mag = 7.42 K X

Date : 12 Apr 2014



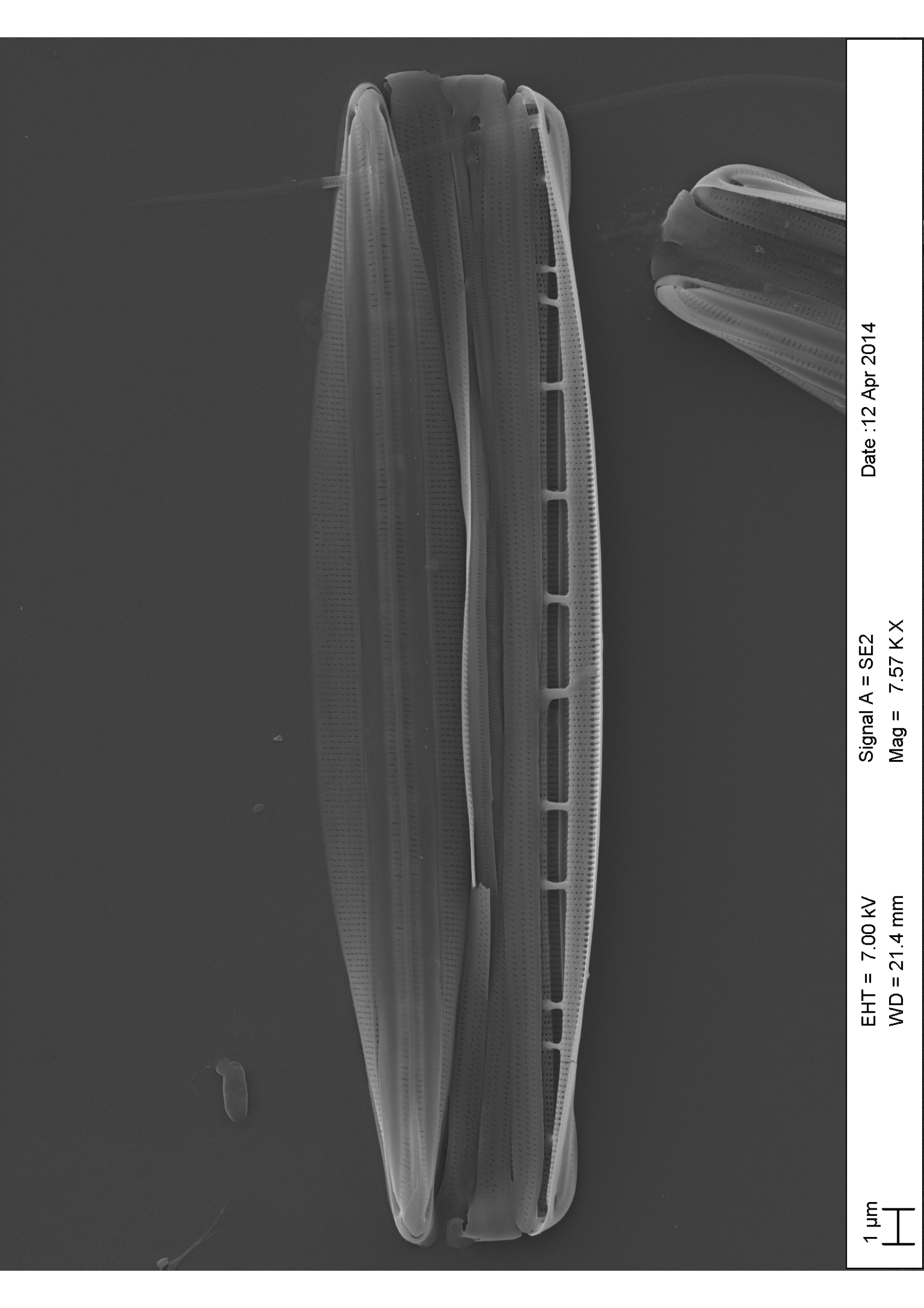
1 μ m



EHT = 7.00 kV
WD = 21.4 mm

Signal A = SE2
Mag = 7.27 K X

Date : 12 Apr 2014



1 μm



EHT = 7.00 kV
WD = 21.4 mm

Signal A = SE2
Mag = 7.57 K X

Date : 12 Apr 2014