

1  $\mu$ m  
┌───┐

Mag = 4.00 K X

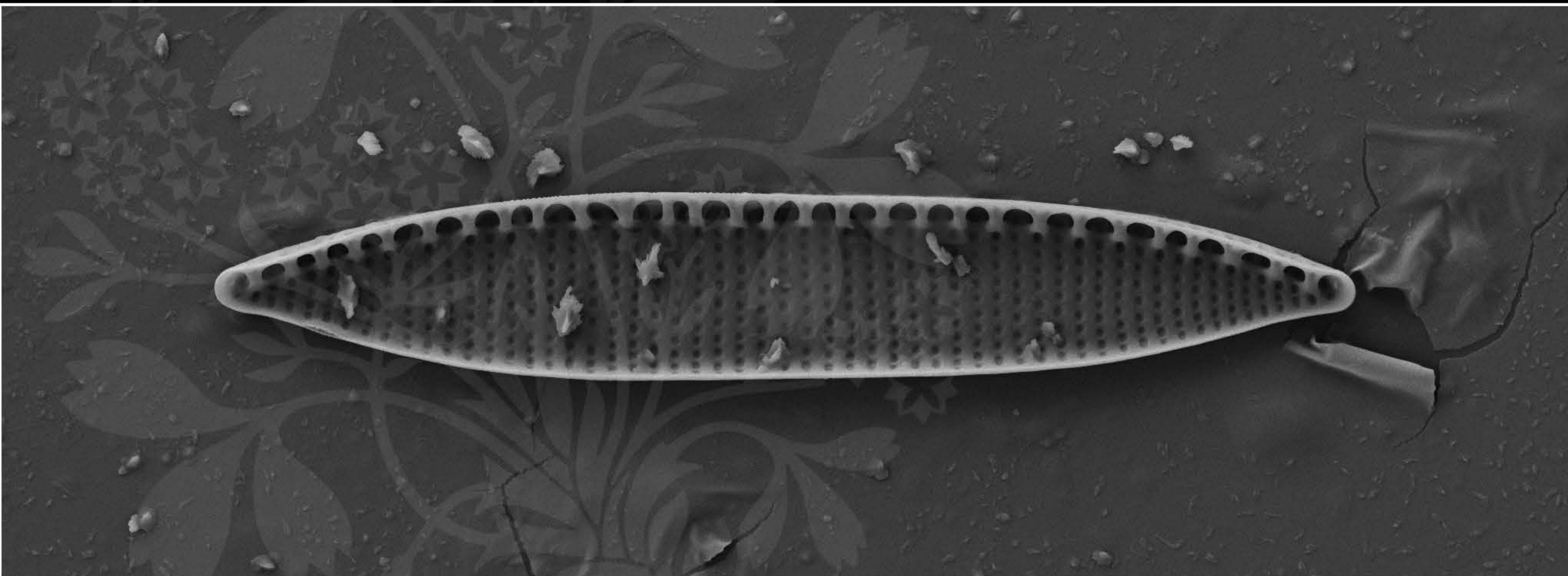
EHT = 5.00 kV

Signal A = SE2 Date : 2 Mar 2020

WD = 4.5 mm

File Name = Nit24\_01.tif





1  $\mu$ m  
┌───┐  
└───┘

Mag = 4.00 K X

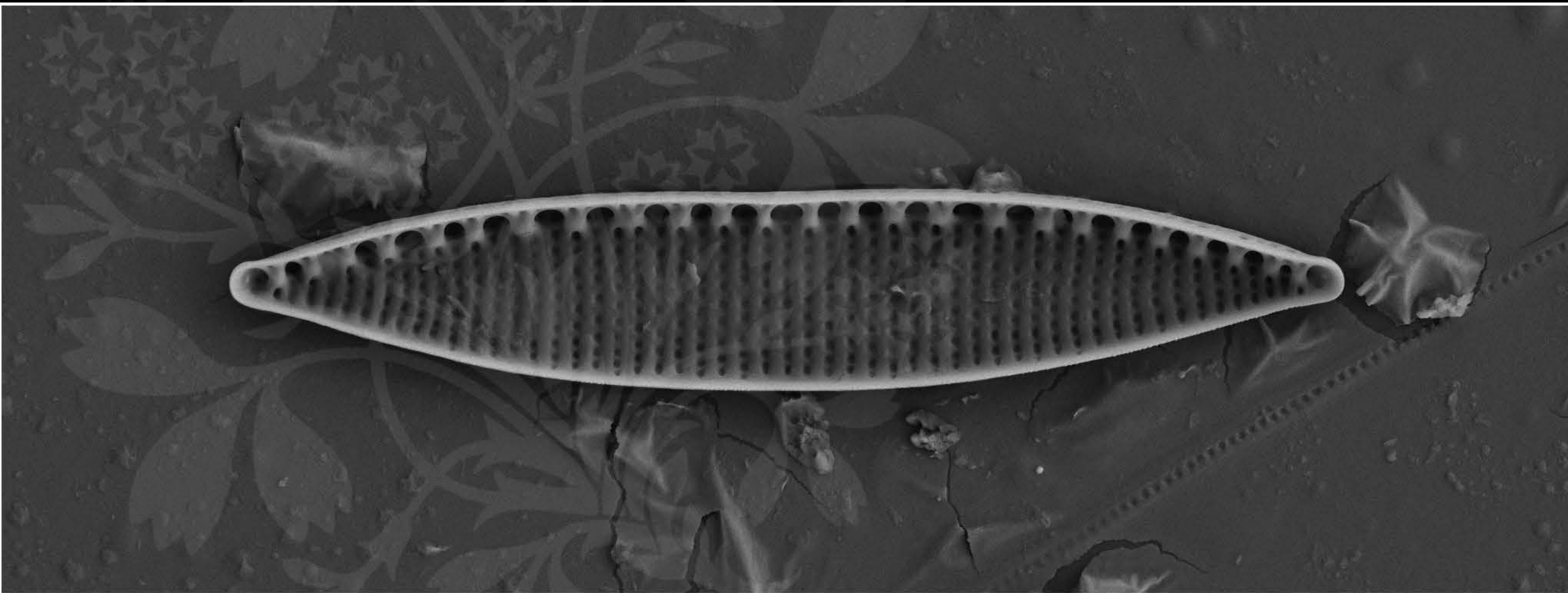
EHT = 5.00 kV

Signal A = SE2 Date : 2 Mar 2020

WD = 4.5 mm

File Name = Nit24\_02.tif





1  $\mu$ m  
┌───┐  
└───┘

Mag = 4.00 K X

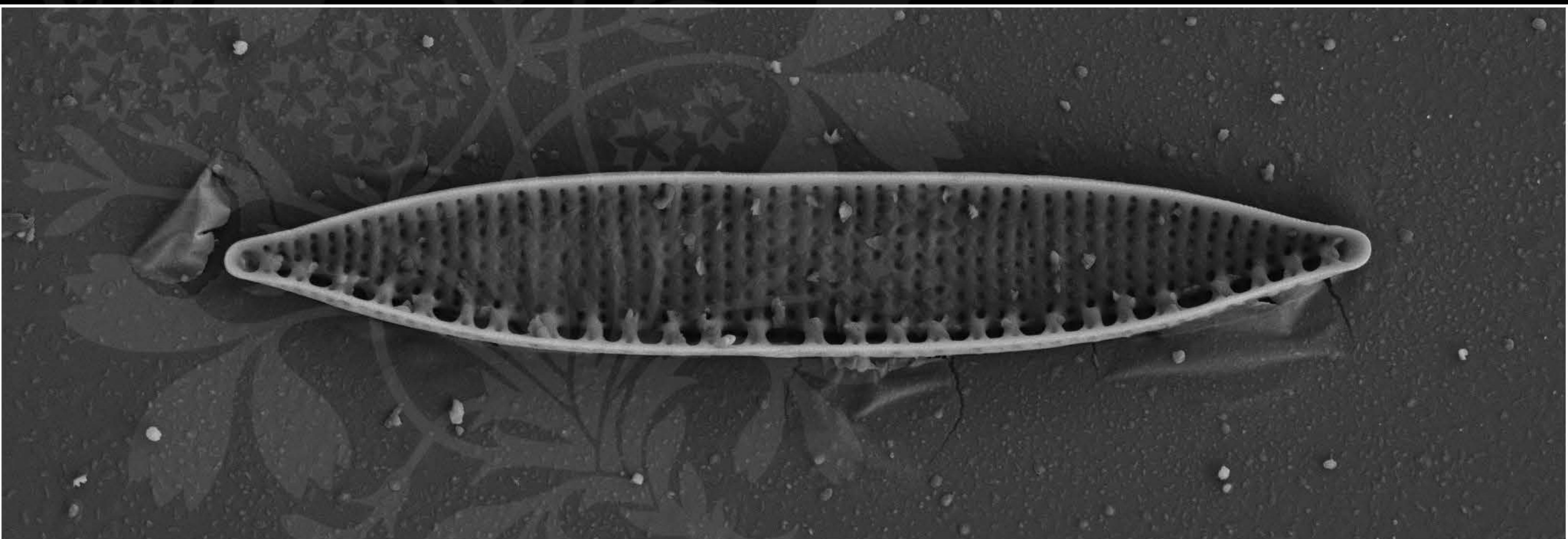
EHT = 5.00 kV

Signal A = SE2 Date : 2 Mar 2020

WD = 4.5 mm

File Name = Nit24\_03.tif





1  $\mu$ m  
┌───┐  
└───┘

Mag = 4.00 K X

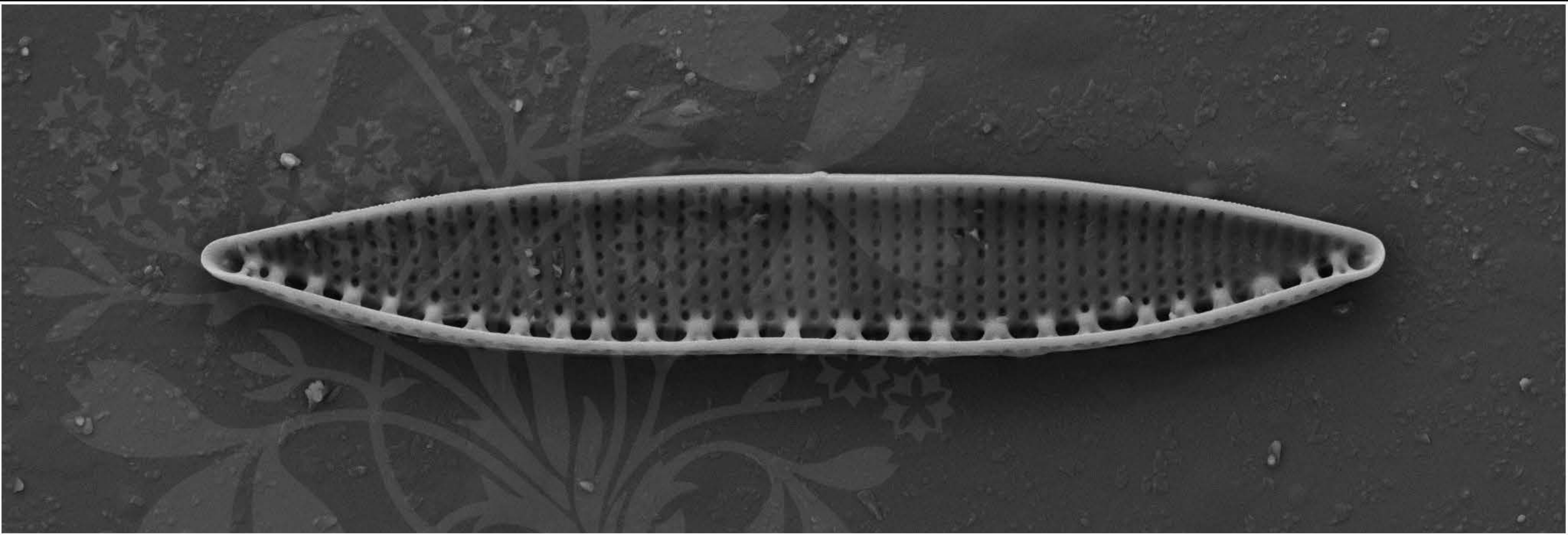
EHT = 5.00 kV

Signal A = SE2 Date : 2 Mar 2020

WD = 4.5 mm

File Name = Nit24\_04.tif





1  $\mu$ m  
┌───┐  
└───┘

Mag = 4.00 K X

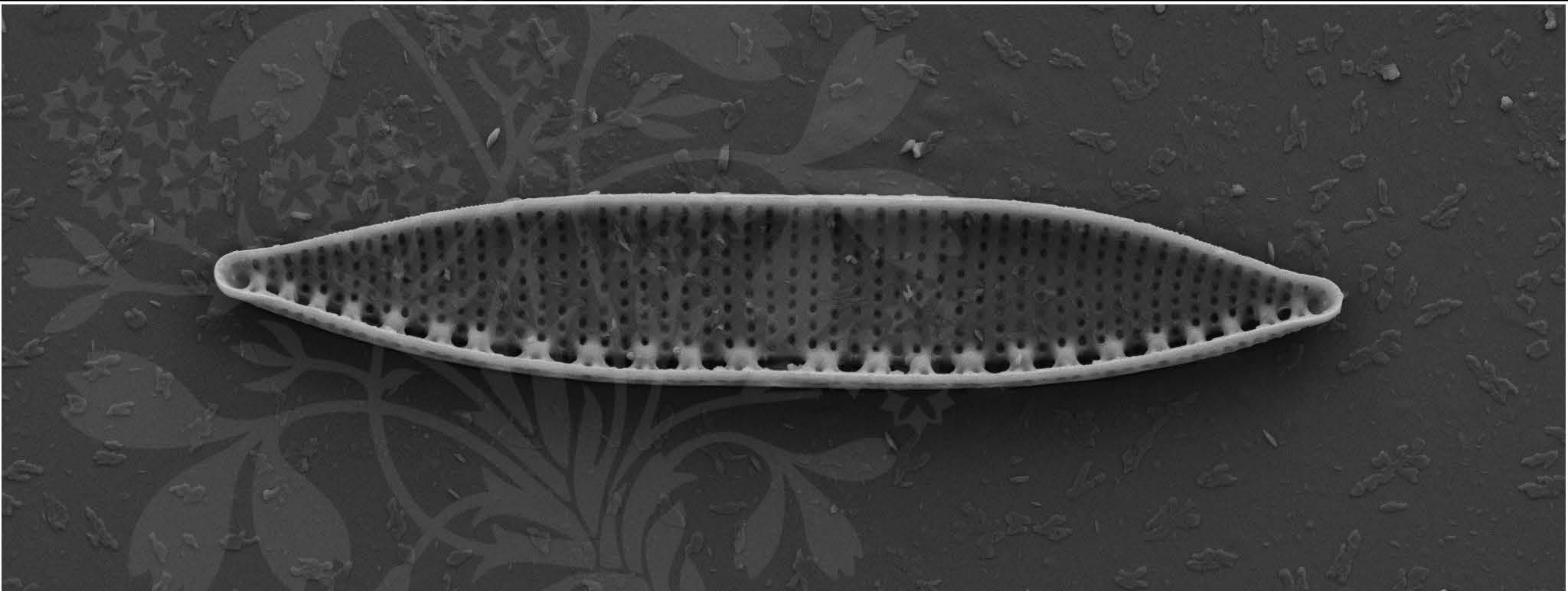
EHT = 5.00 kV

Signal A = SE2 Date : 2 Mar 2020

WD = 4.6 mm

File Name = Nit24\_05.tif





1  $\mu$ m  
┌───┐  
└───┘

Mag = 4.00 K X

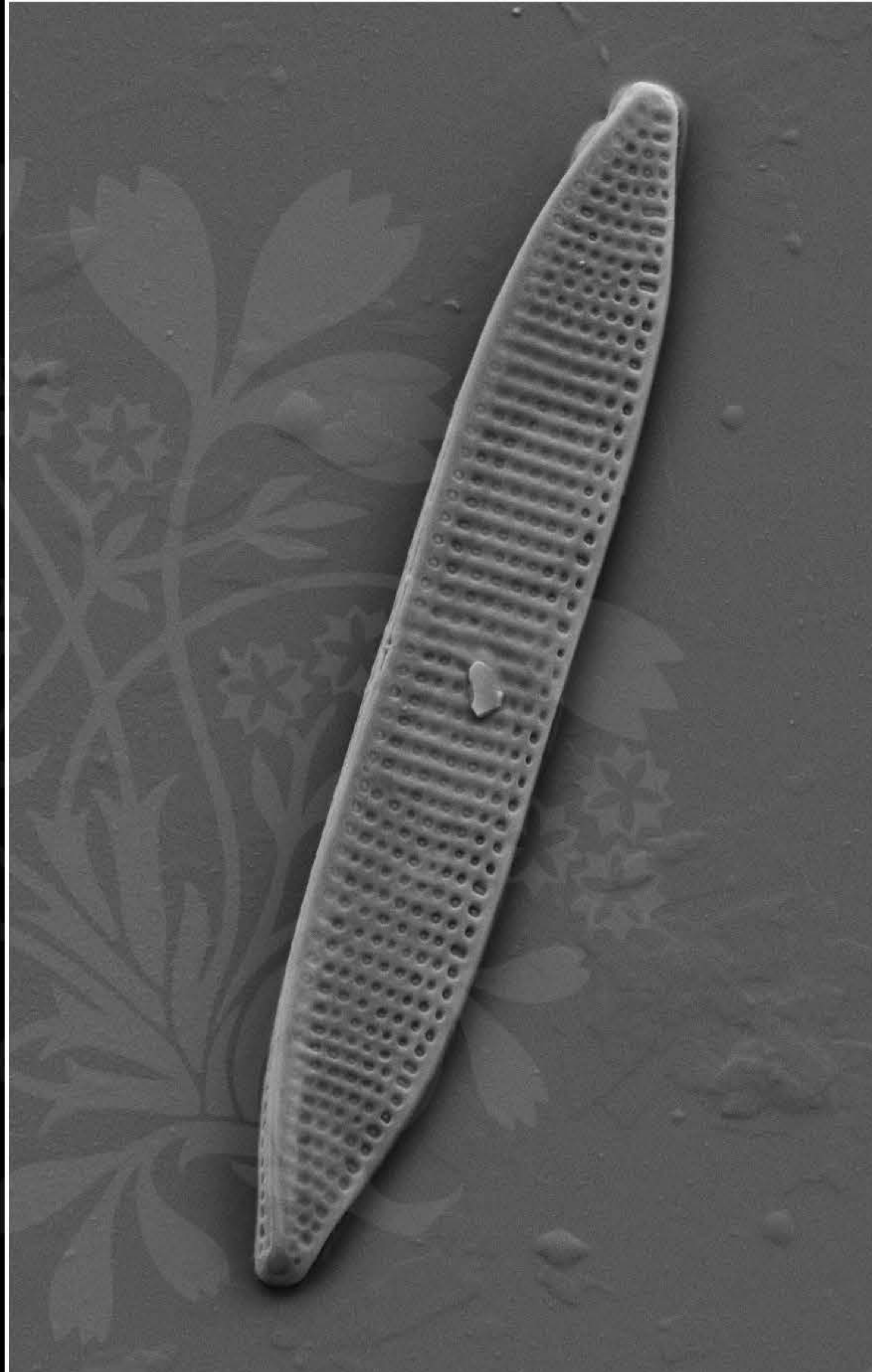
EHT = 5.00 kV

Signal A = SE2 Date : 2 Mar 2020

WD = 4.5 mm

File Name = Nit24\_06.tif





1  $\mu$ m  
┌───┐

Mag = 3.60 K X

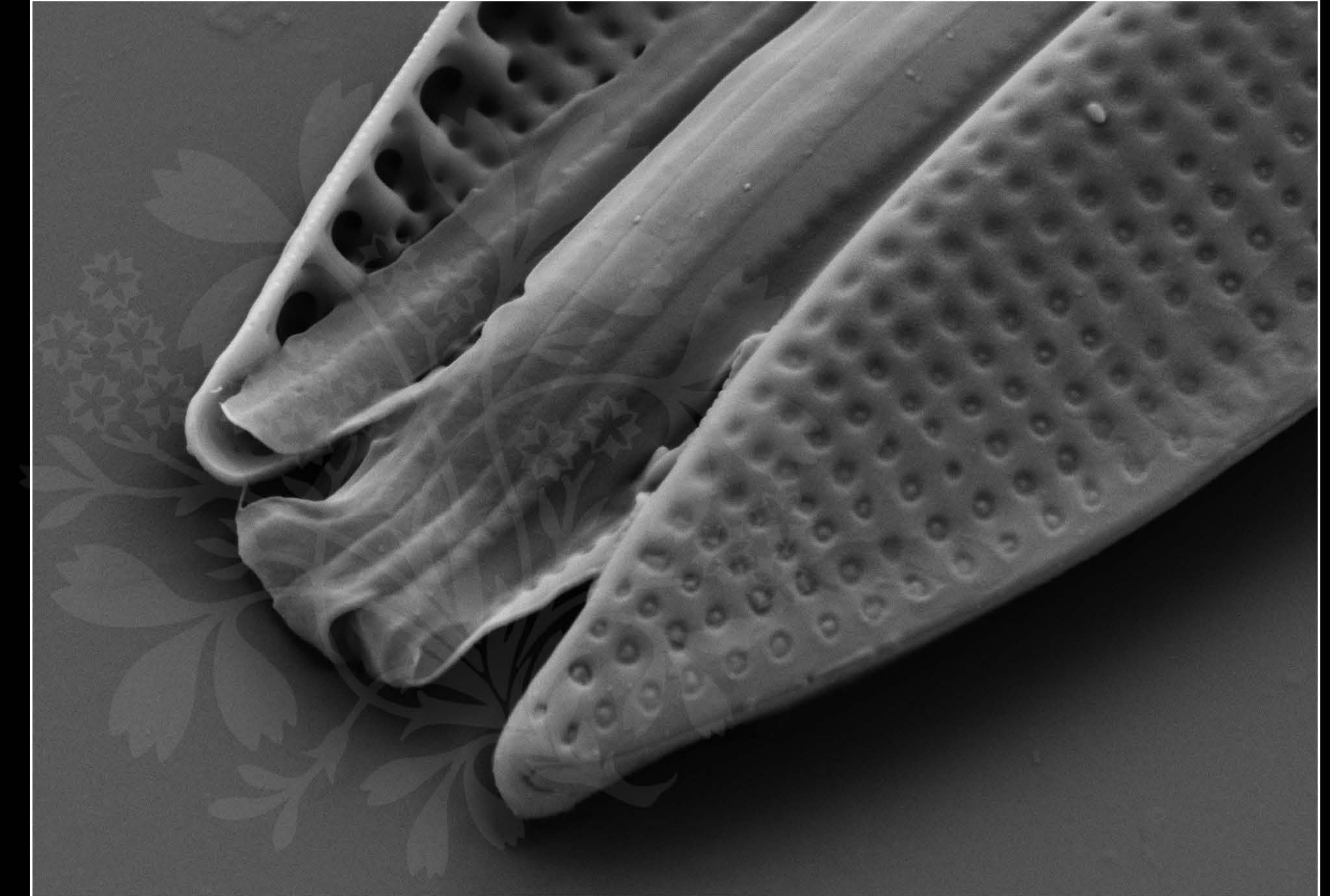
EHT = 5.00 kV

Signal A = SE2 Date : 2 Mar 2020

WD = 4.8 mm

File Name = Nit24\_07.tif





200 nm

H

Mag = 12.00 K X

EHT = 5.00 kV

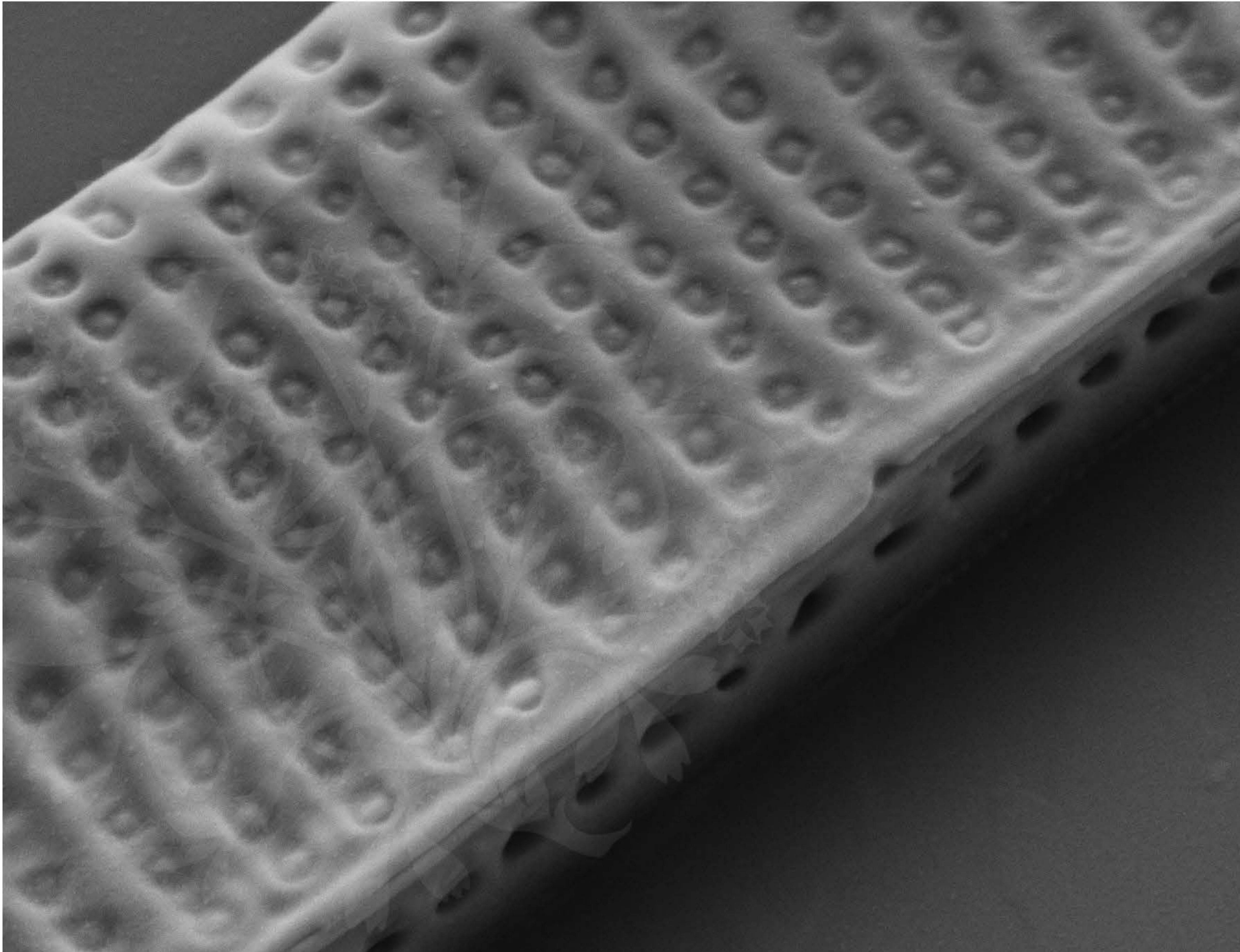
Signal A = SE2 Date : 2 Mar 2020

WD = 4.8 mm

File Name = Nit24\_08.tif







100 nm

H

Mag = 20.00 K X

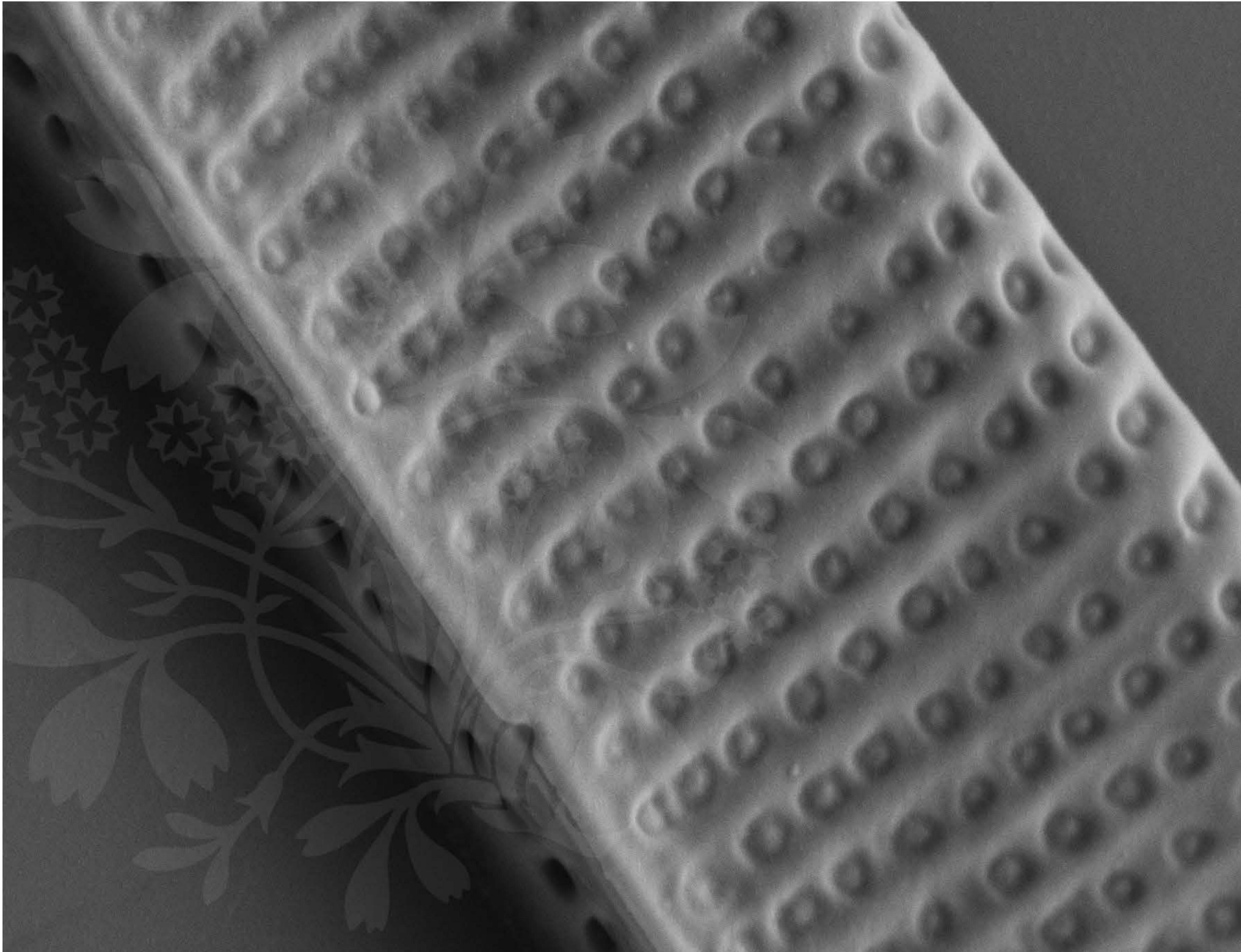
EHT = 5.00 kV

Signal A = SE2 Date : 2 Mar 2020

WD = 4.8 mm

File Name = Nit24\_09.tif





100 nm

H

Mag = 20.00 K X

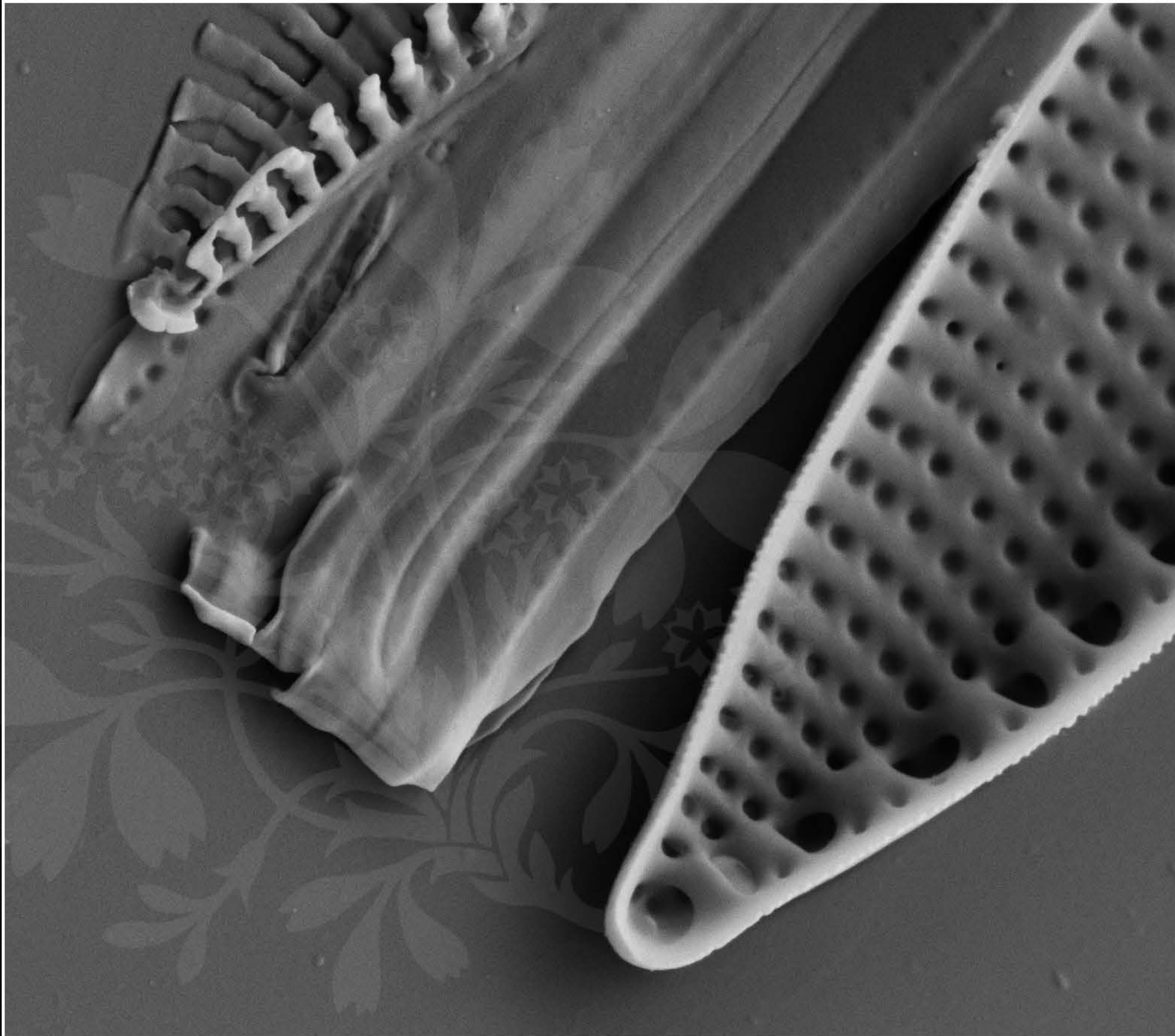
EHT = 5.00 kV

Signal A = SE2 Date : 2 Mar 2020

WD = 4.8 mm

File Name = Nit24\_10.tif





200 nm

H

Mag = 12.00 K X

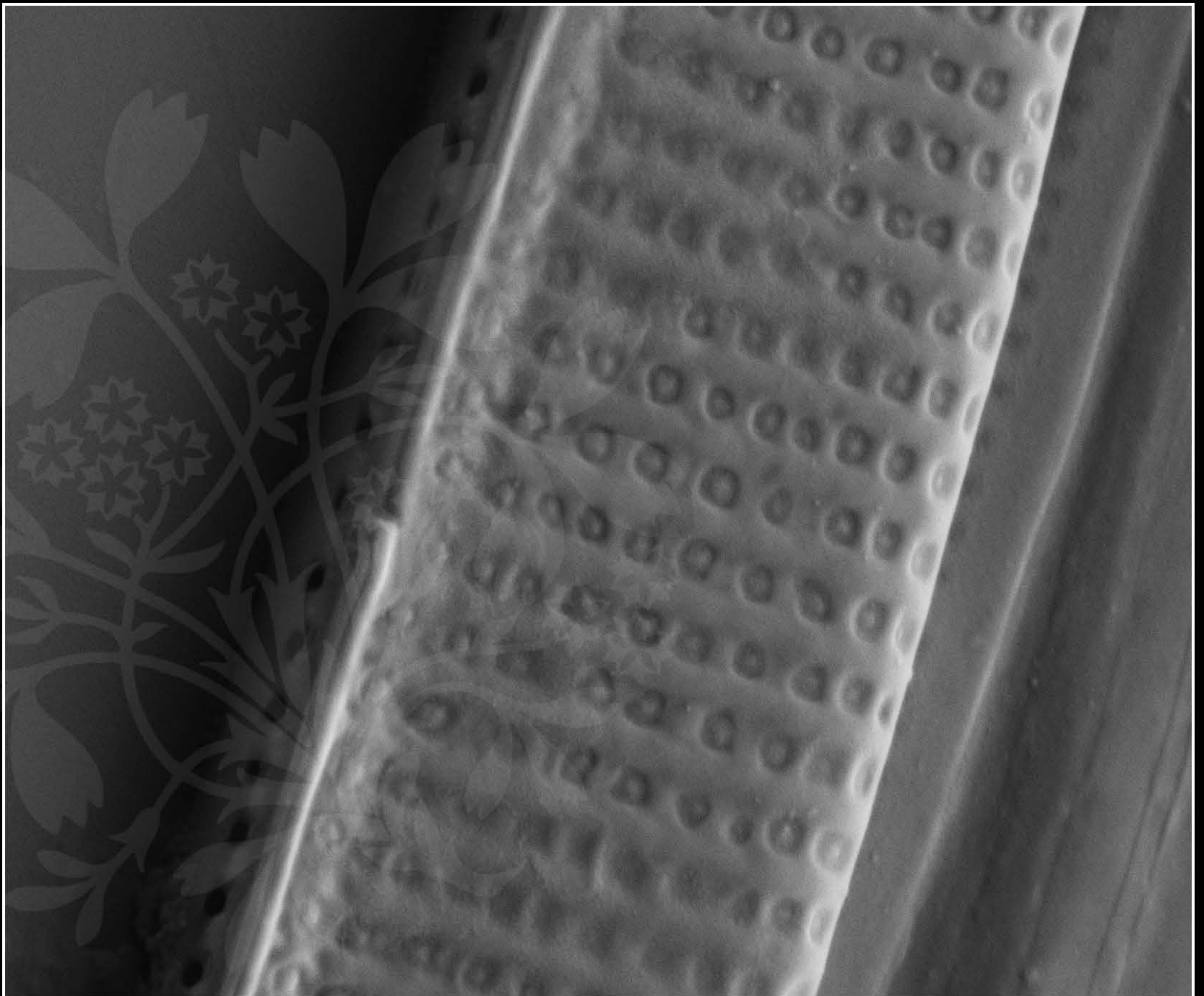
EHT = 5.00 kV

Signal A = SE2 Date : 2 Mar 2020

WD = 4.8 mm

File Name = Nit24\_11.tif





200 nm  
H

Mag = 15.56 K X

EHT = 5.00 kV

Signal A = SE2 Date : 2 Mar 2020

WD = 4.8 mm

File Name = Nit24\_12.tif

