



1 μ m
┌───┐

Mag = 5.00 K X

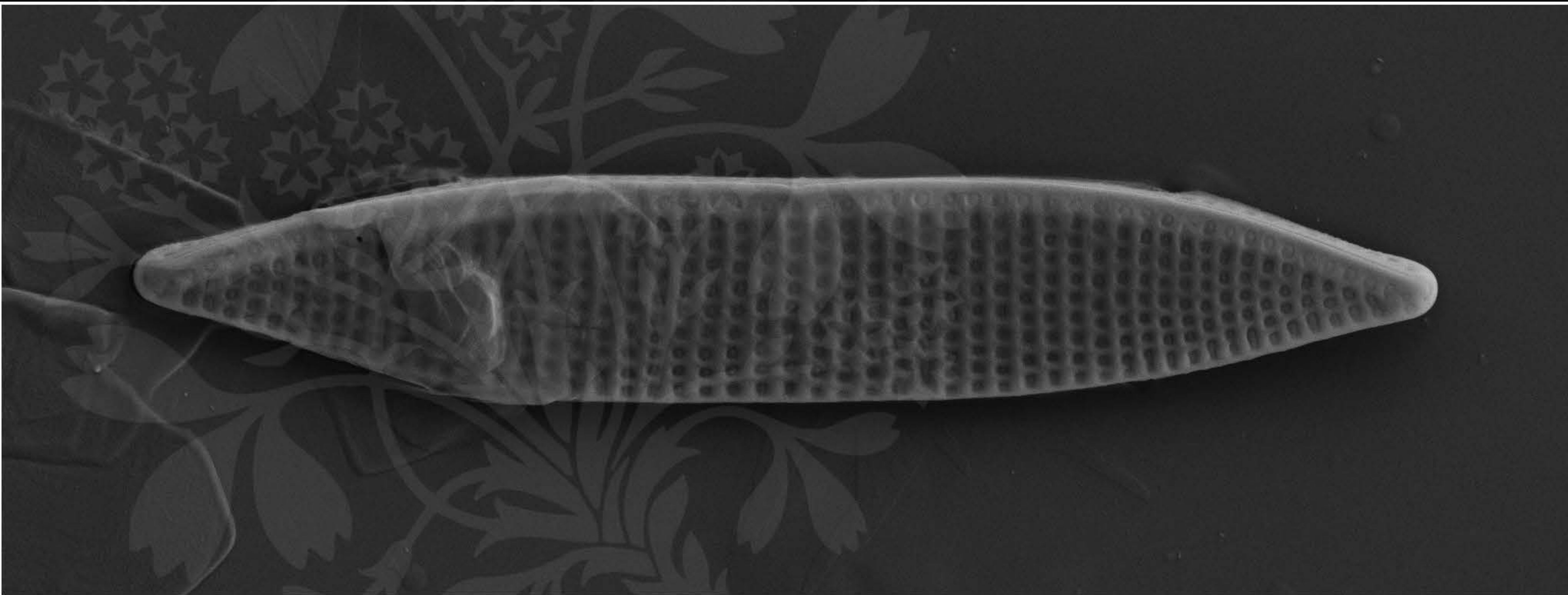
EHT = 5.00 kV

Signal A = SE2 Date : 2 Mar 2020

WD = 4.3 mm

File Name = Nit25_01.tif





1 μ m
┌───┐

Mag = 5.00 K X

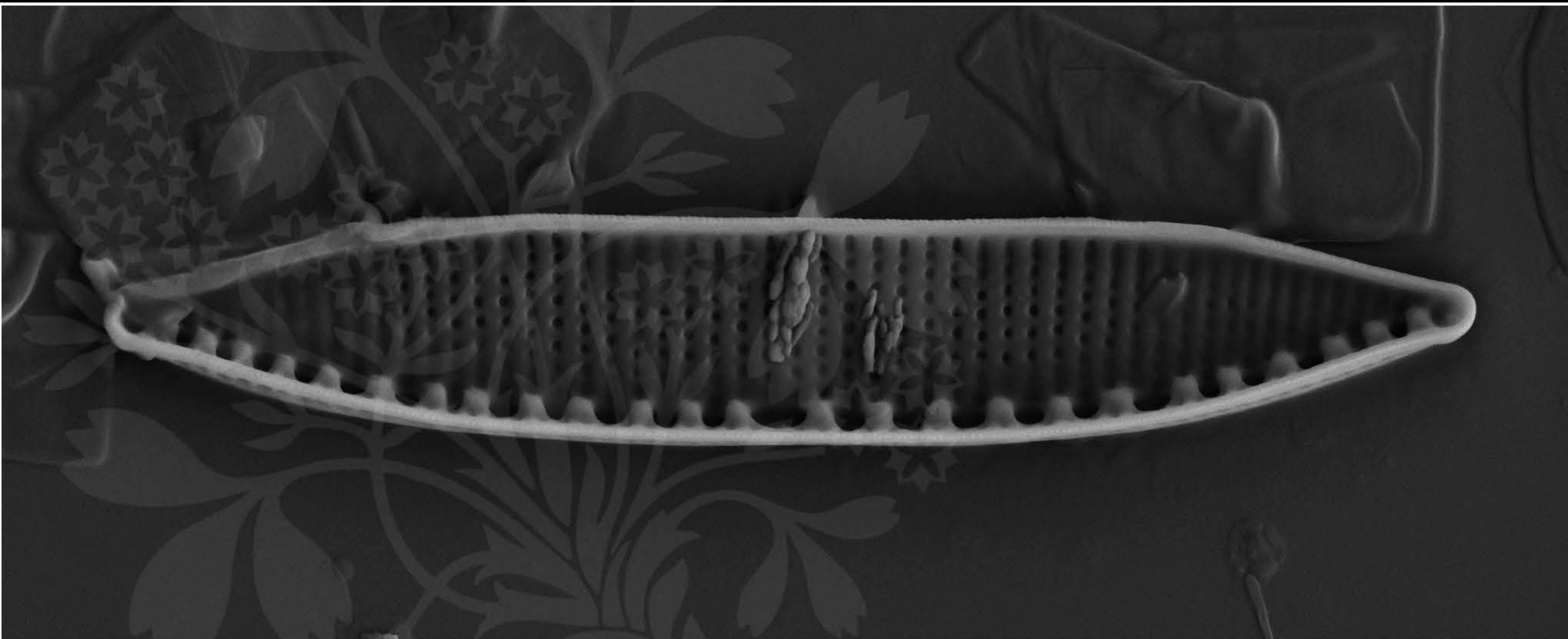
EHT = 5.00 kV

Signal A = SE2 Date : 2 Mar 2020

WD = 4.3 mm

File Name = Nit25_02.tif





1 μ m
┌───┐

Mag = 5.00 K X

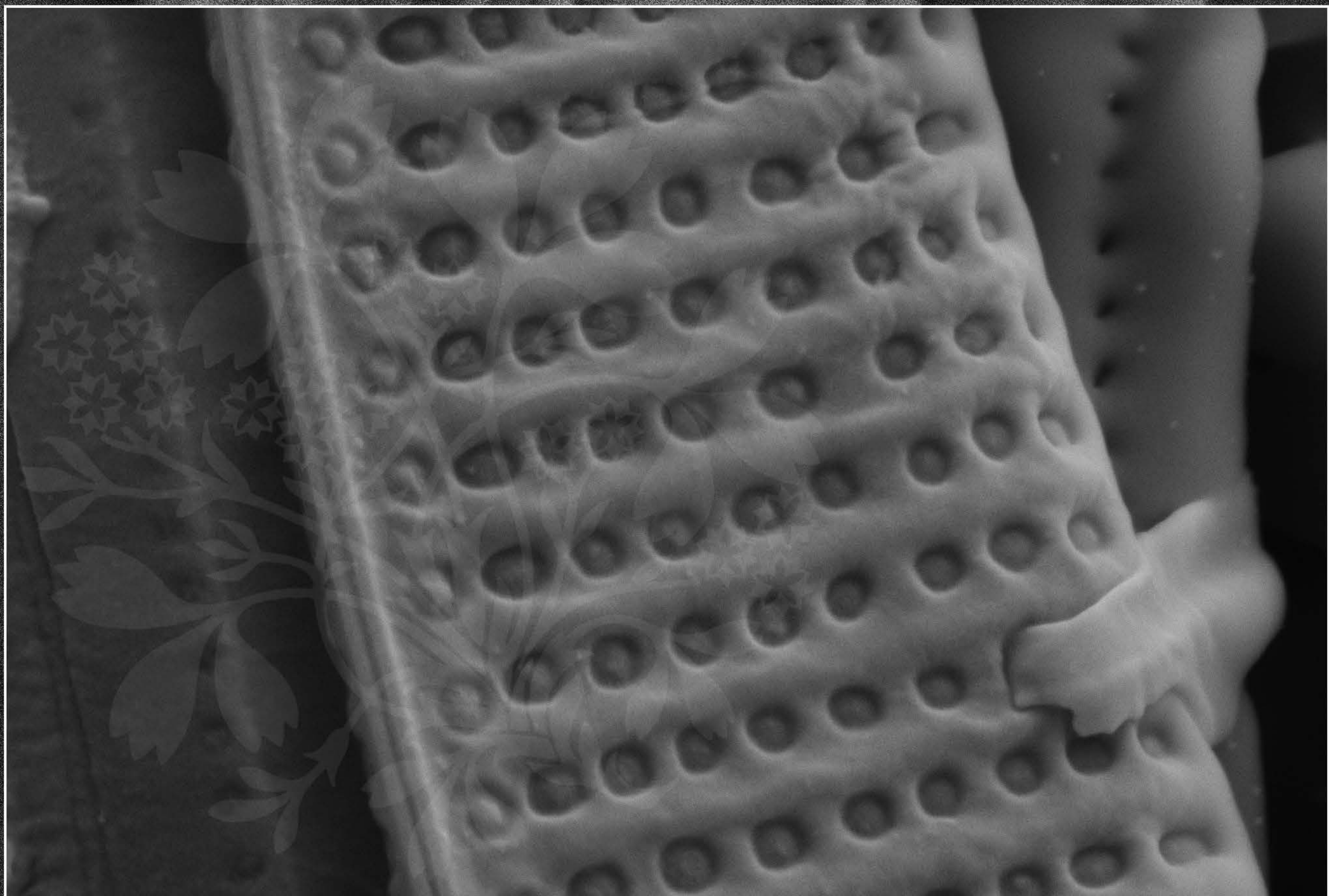
EHT = 5.00 kV

Signal A = SE2 Date : 2 Mar 2020

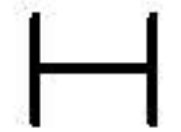
WD = 4.3 mm

File Name = Nit25_03.tif





100 nm



Mag = 25.00 K X

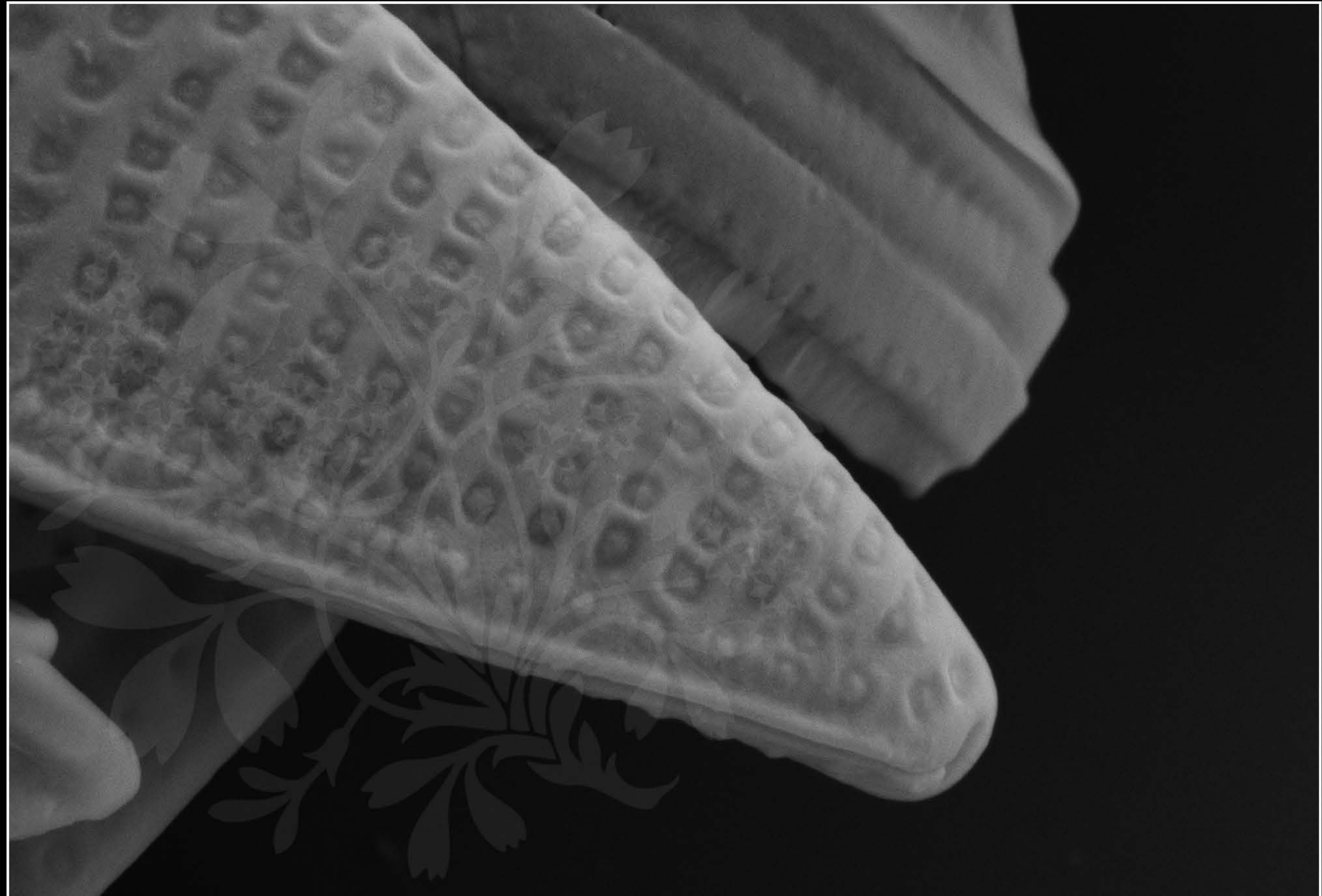
EHT = 5.00 kV

Signal A = SE2 Date : 2 Mar 2020

WD = 4.3 mm

File Name = Nit25_04.tif





100 nm

H

Mag = 20.00 K X

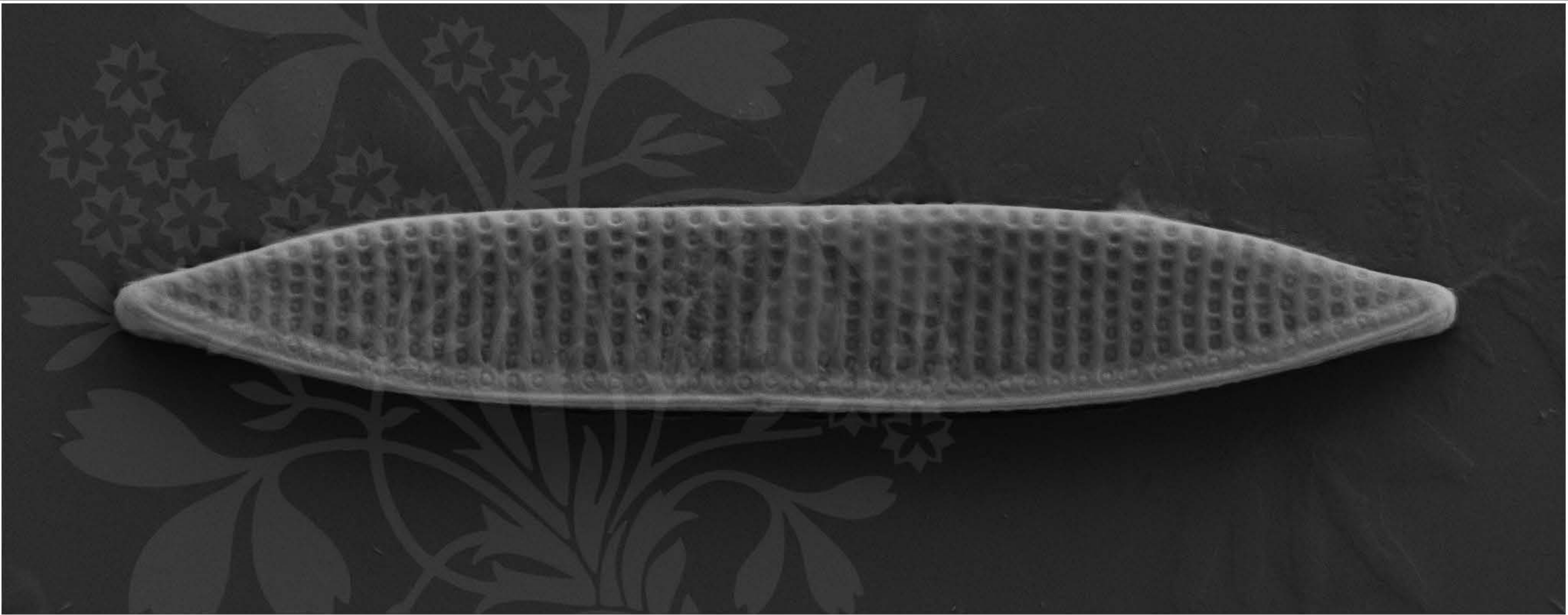
EHT = 5.00 kV

Signal A = SE2 Date : 2 Mar 2020

WD = 4.3 mm

File Name = Nit25_05.tif





1 μ m
|
|

Mag = 5.00 K X

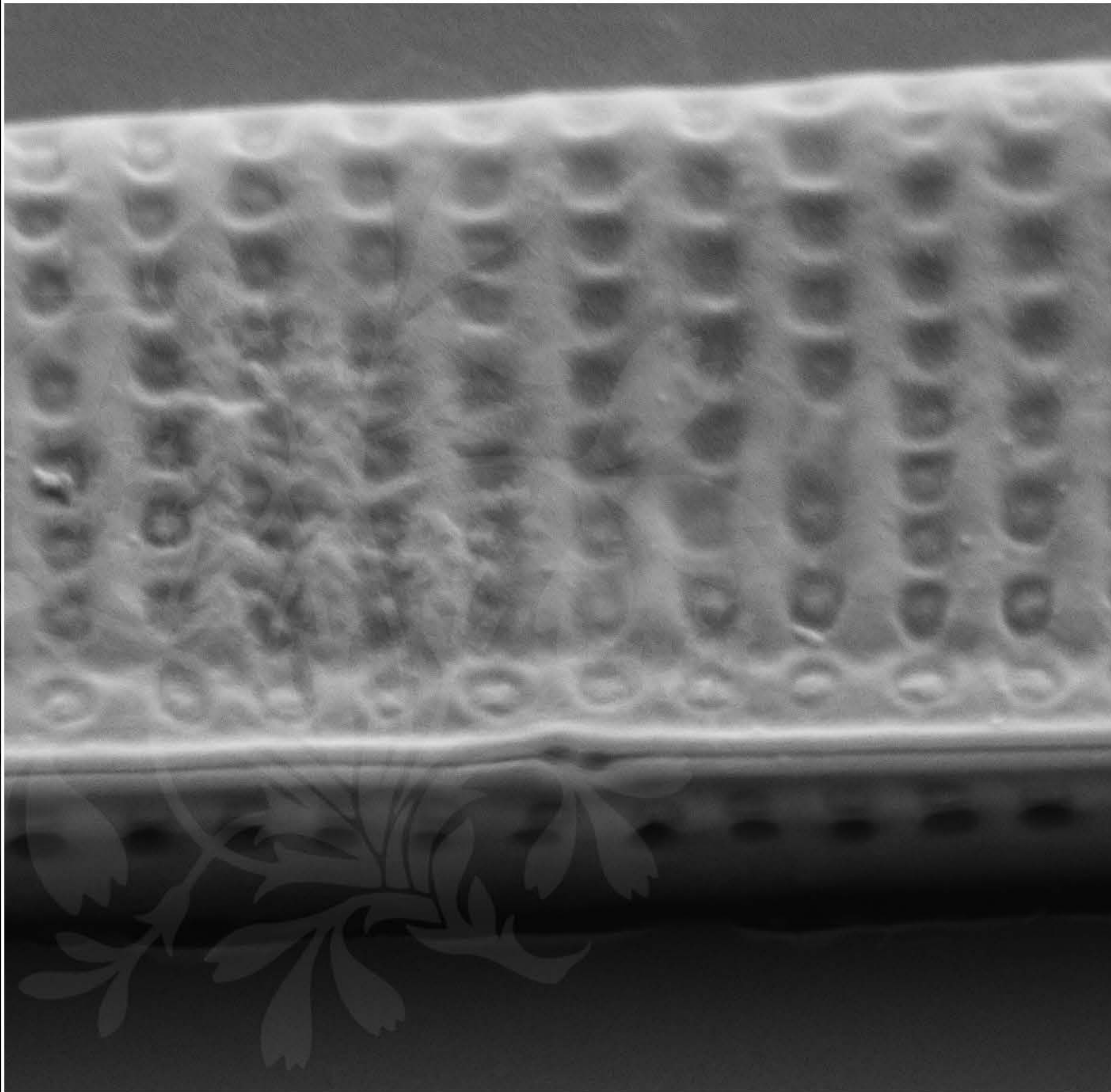
EHT = 5.00 kV

Signal A = SE2 Date : 2 Mar 2020

WD = 4.3 mm

File Name = Nit25_06.tif





100 nm
H

Mag = 20.00 K X

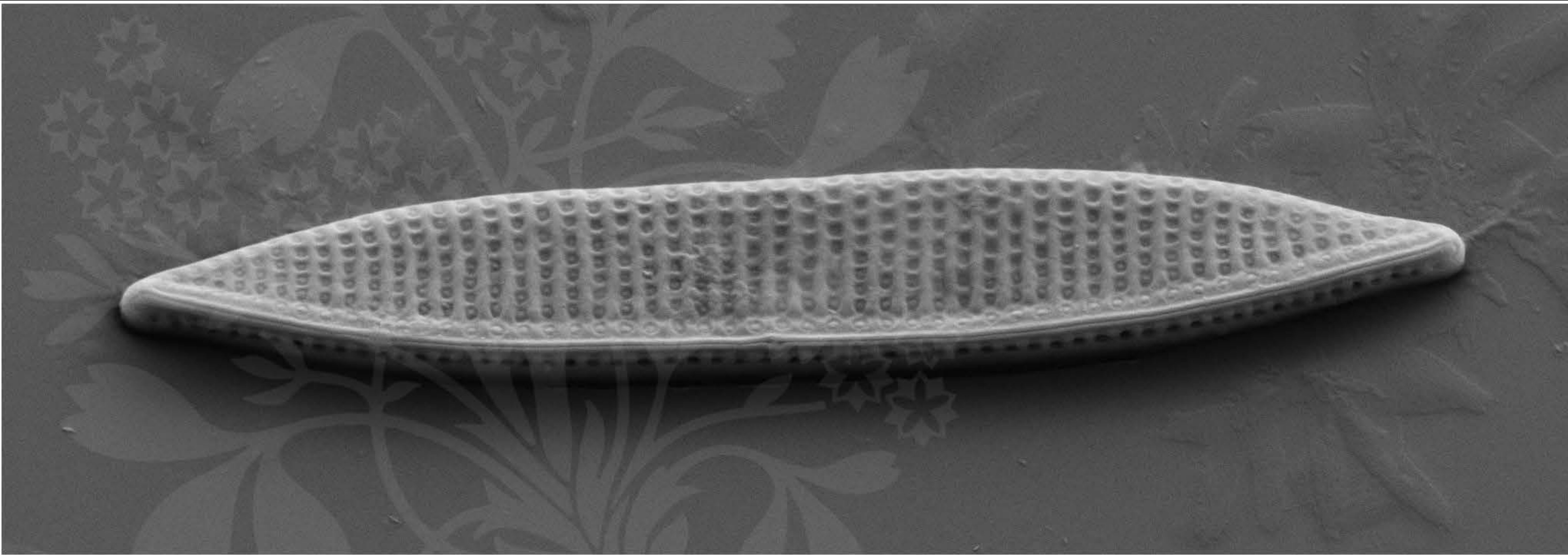
EHT = 5.00 kV

Signal A = SE2 Date : 2 Mar 2020

WD = 4.6 mm

File Name = Nit25_07.tif





1 μ m
|
|

Mag = 5.00 K X

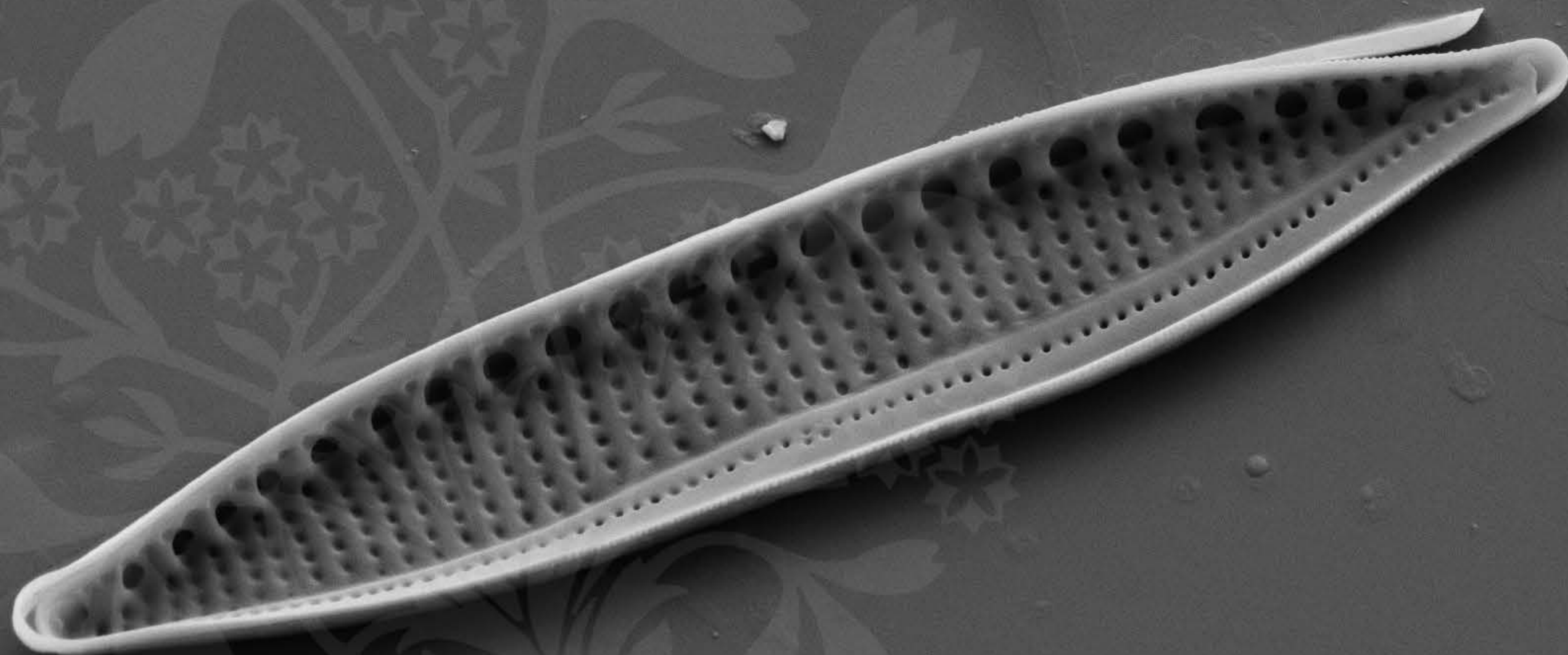
EHT = 5.00 kV

Signal A = SE2 Date : 2 Mar 2020

WD = 4.6 mm

File Name = Nit25_08.tif





1 μ m
|-----|

Mag = 5.00 K X

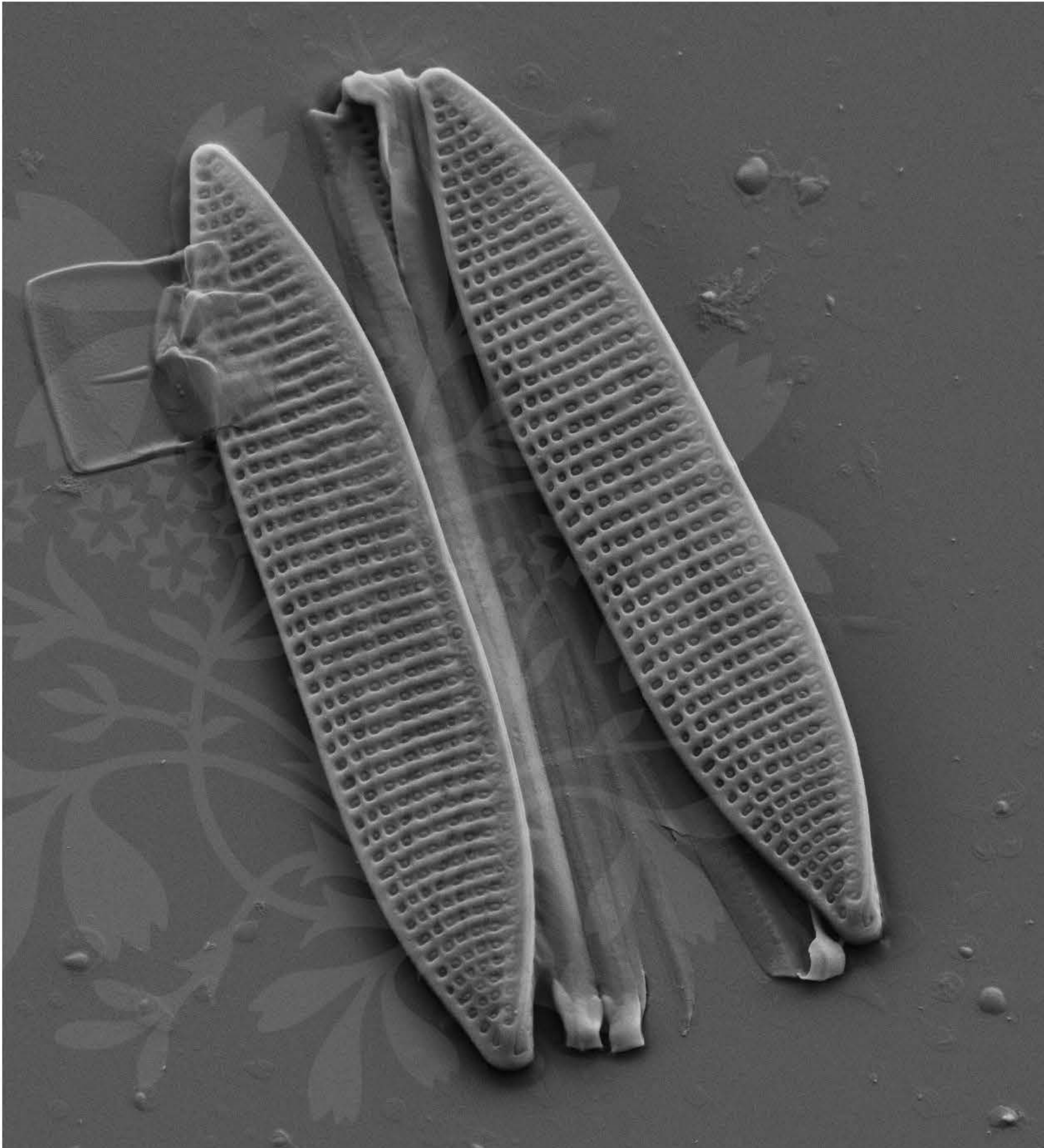
EHT = 5.00 kV

Signal A = SE2 Date : 2 Mar 2020

WD = 4.6 mm

File Name = Nit25_09.tif





1 μ m
┆┆┆

Mag = 3.80 K X

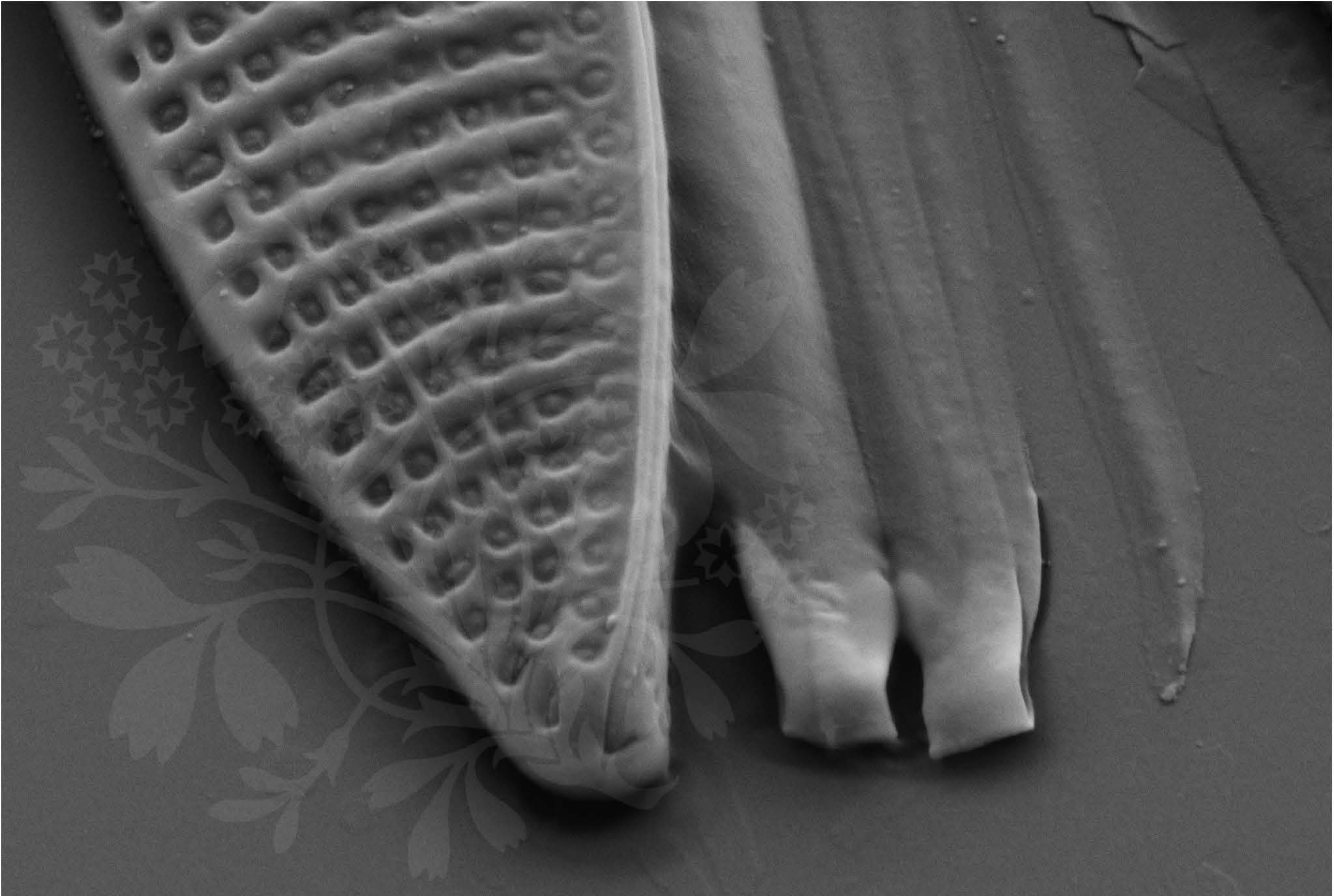
EHT = 5.00 kV

Signal A = SE2 Date : 2 Mar 2020

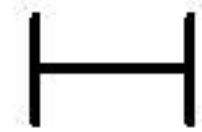
WD = 4.6 mm

File Name = Nit25_10.tif





200 nm



Mag = 16.00 K X

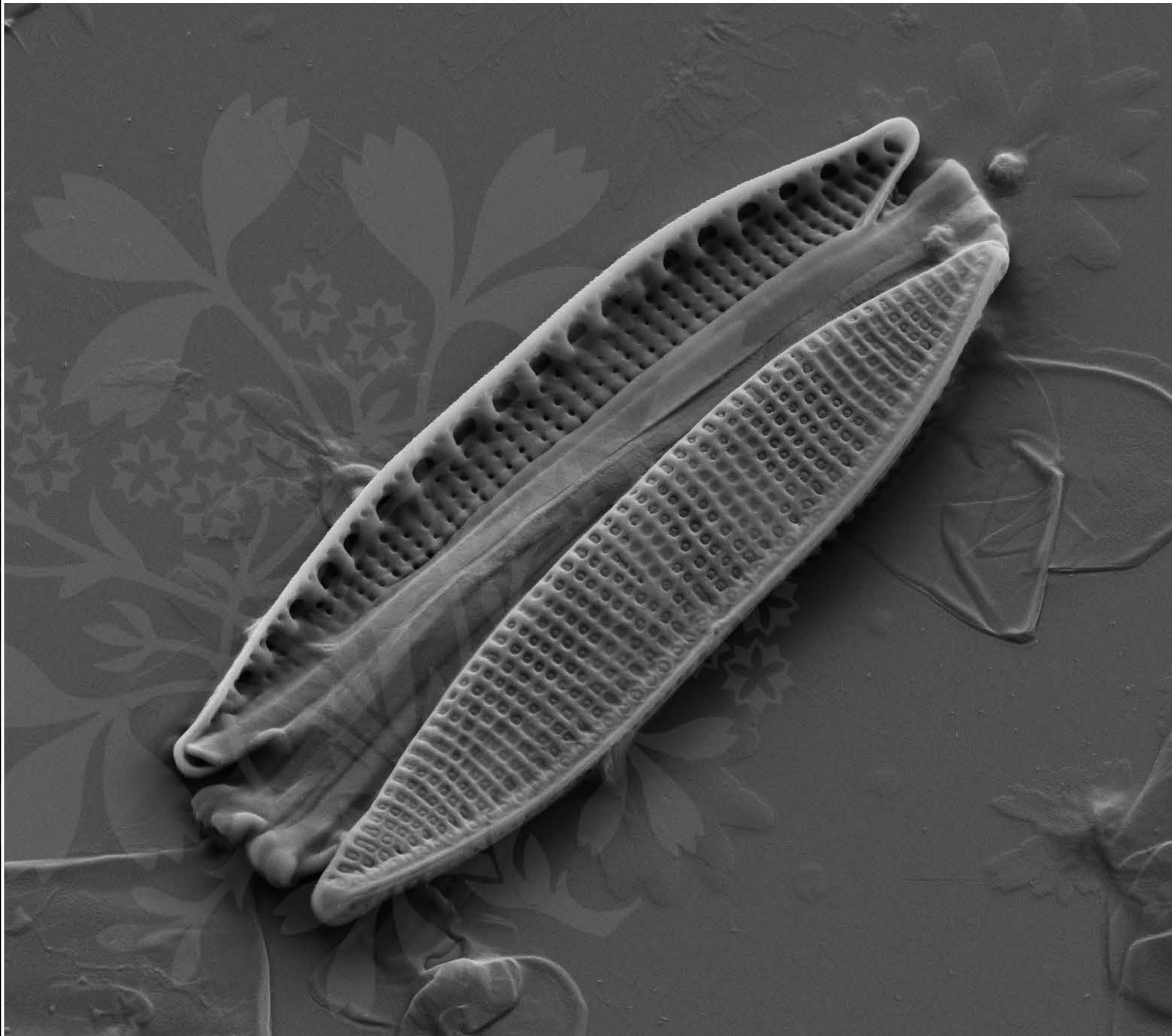
EHT = 5.00 kV

Signal A = SE2 Date : 2 Mar 2020

WD = 4.6 mm

File Name = Nit25_11.tif





1 μ m
┆

Mag = 4.00 K X

EHT = 5.00 kV

Signal A = SE2 Date : 2 Mar 2020

WD = 4.6 mm

File Name = Nit25_12.tif





100 nm

H

Mag = 20.00 K X

EHT = 5.00 kV

Signal A = SE2 Date : 2 Mar 2020

WD = 4.4 mm

File Name = Nit25_13.tif

