

1 μ m
H

Mag = 3.20 K X

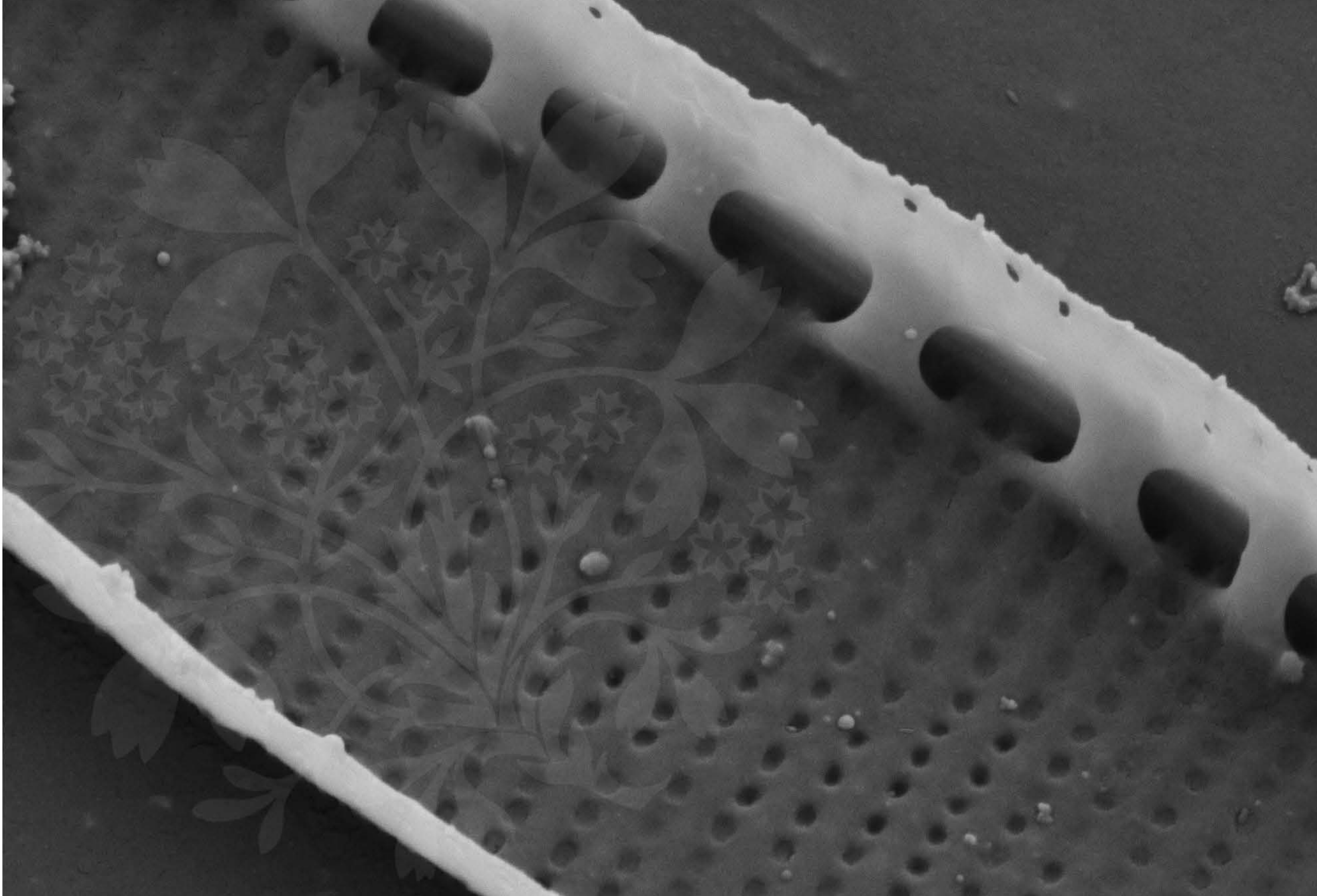
EHT = 5.00 kV

Signal A = SE2 Date :26 Feb 2020

WD = 4.3 mm

File Name = SpainA4_01.tif





100 nm

H

Mag = 20.00 K X

EHT = 5.00 kV

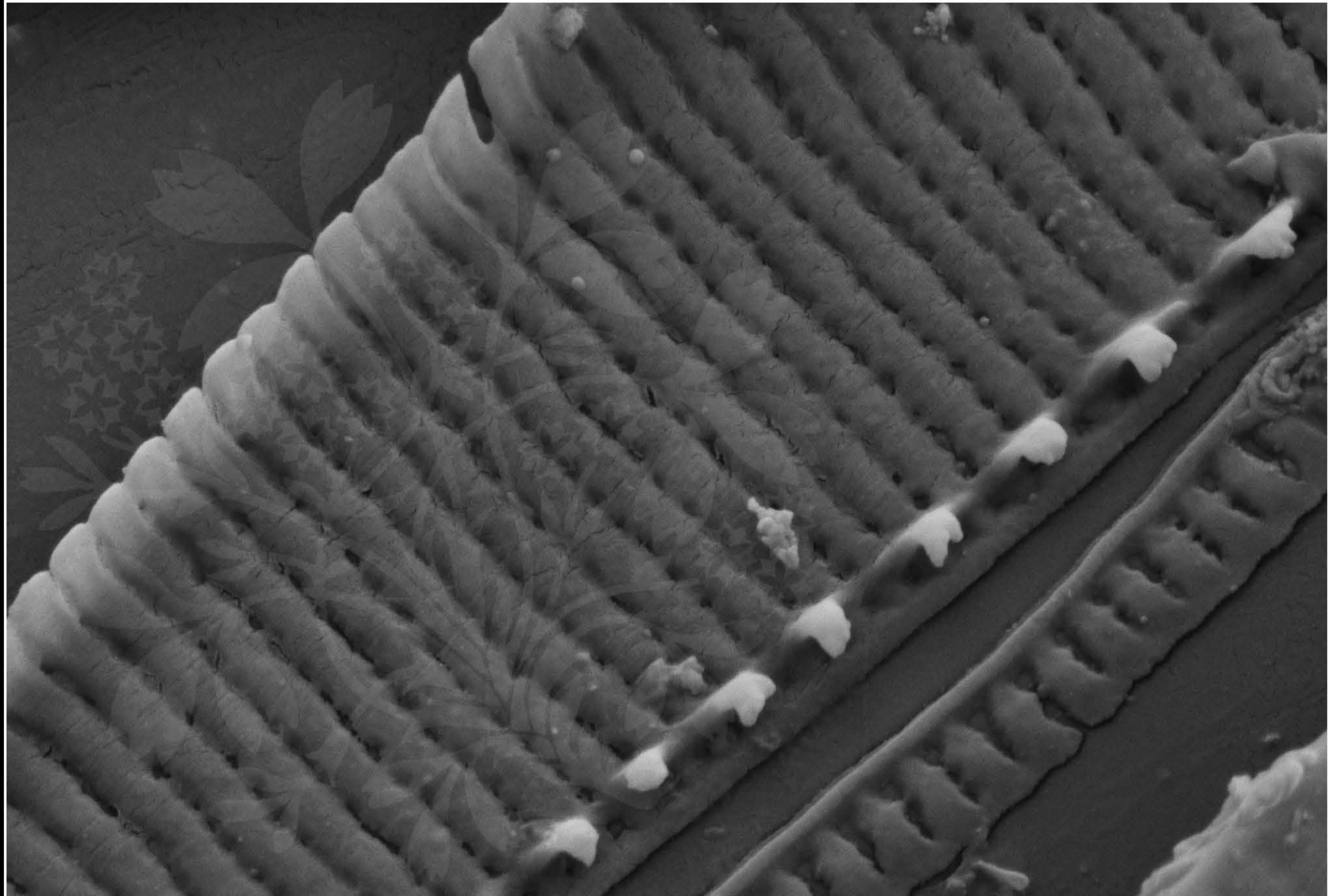
Signal A = SE2

Date :26 Feb 2020

WD = 4.3 mm

File Name = SpainA4_02.tif





100 nm

H

Mag = 20.00 K X

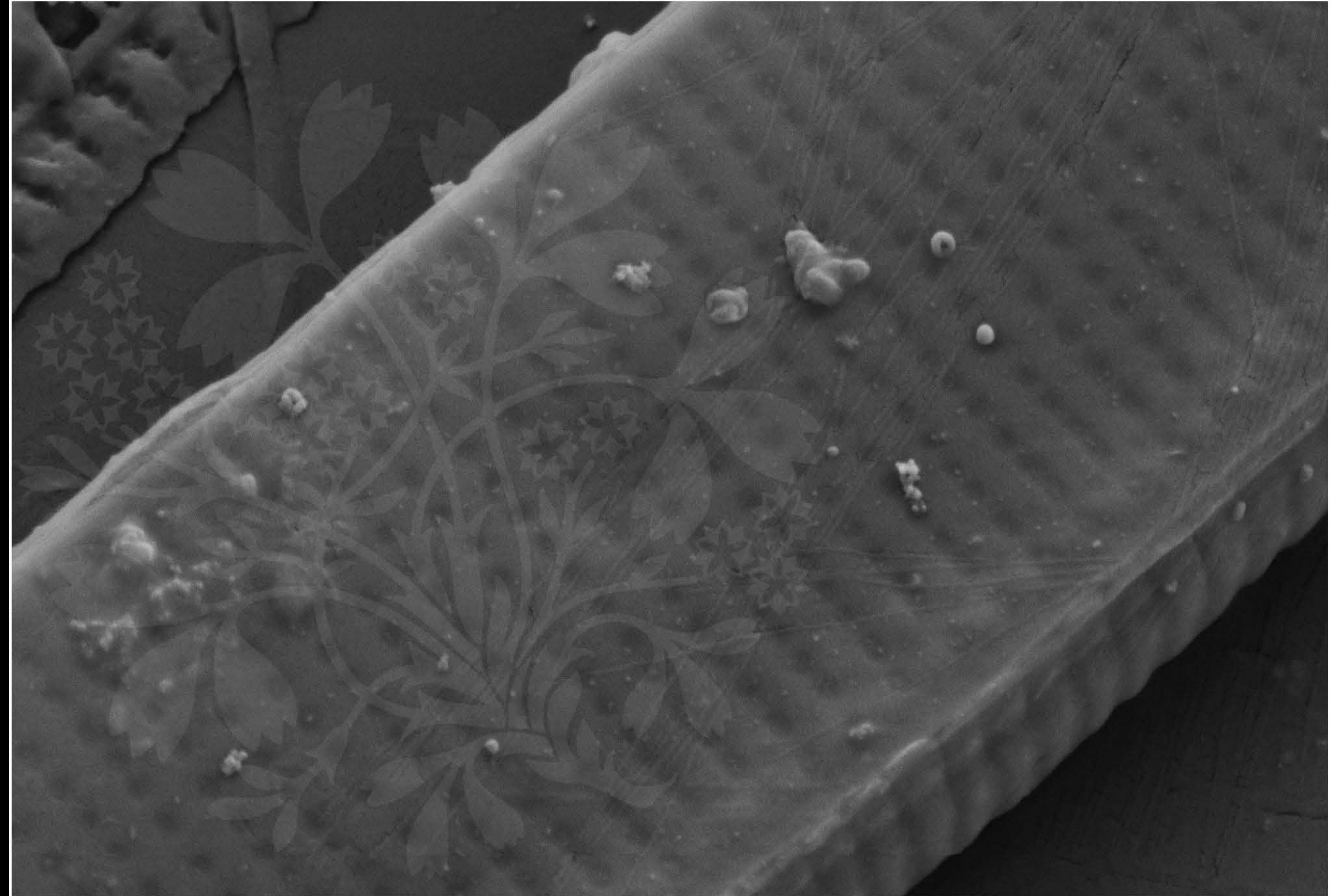
EHT = 5.00 kV

Signal A = SE2 Date :26 Feb 2020

WD = 4.3 mm

File Name = SpainA4_03.tif





100 nm

H

Mag = 20.00 K X

EHT = 5.00 kV

Signal A = SE2 Date :26 Feb 2020

WD = 4.3 mm

File Name = SpainA4_04.tif

