

1 μ m
H

Mag = 3.00 K X

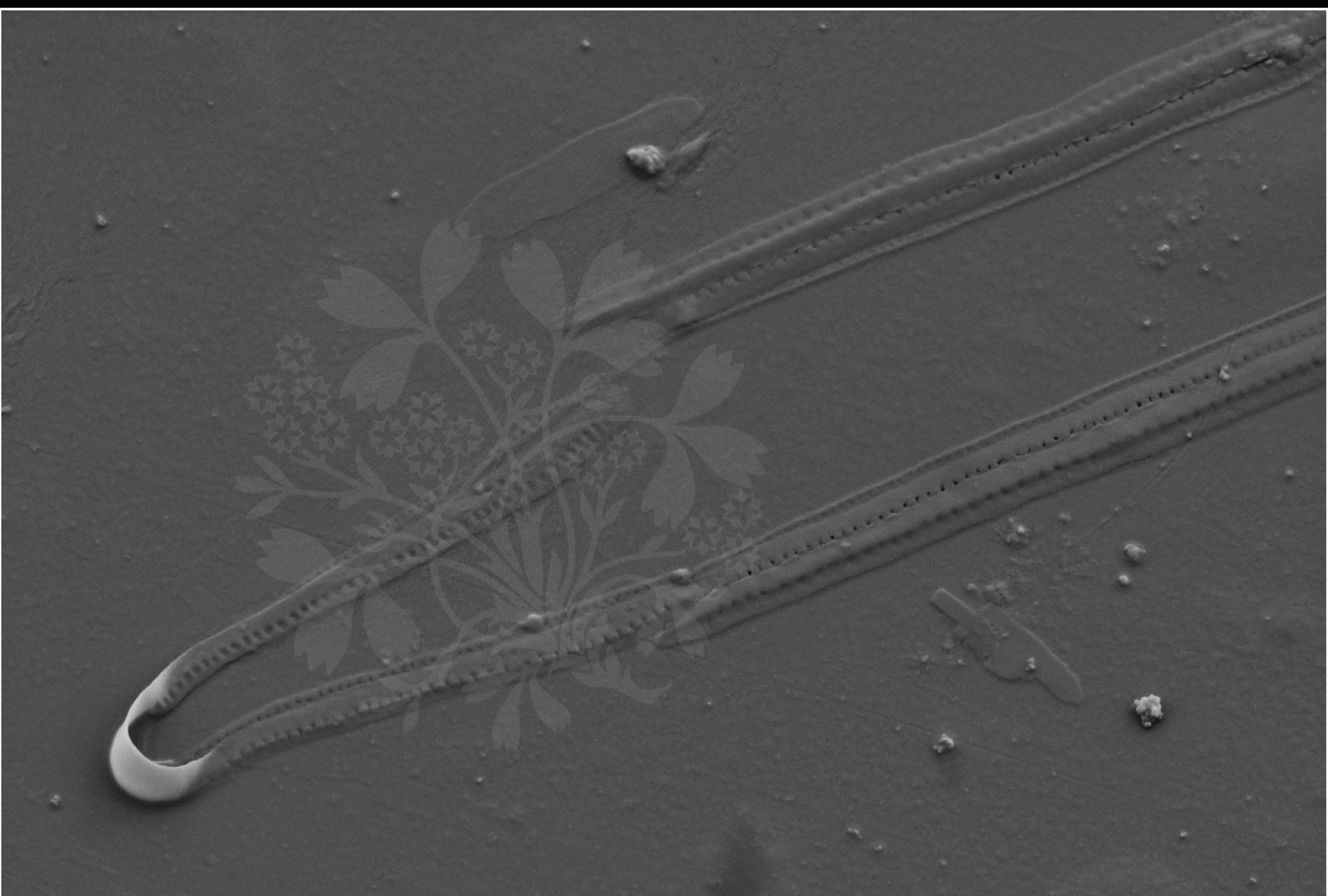
EHT = 5.00 kV

Signal A = SE2 Date : 19 Feb 2020

WD = 4.5 mm

File Name = SriLankaA_01.tif





1 μ m
|-----|

Mag = 8.00 K X

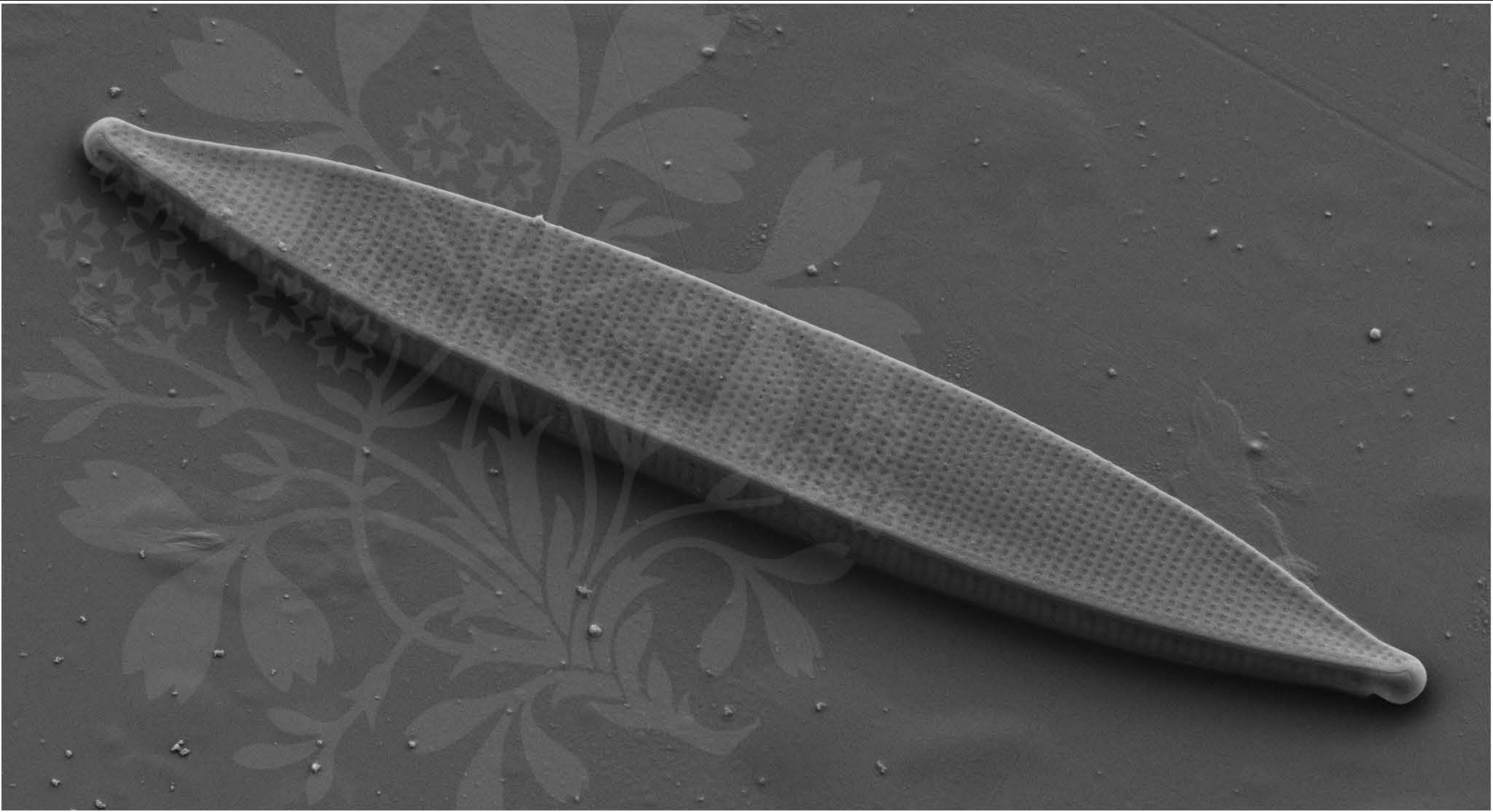
EHT = 5.00 kV

Signal A = SE2 Date : 19 Feb 2020

WD = 4.5 mm

File Name = SriLankaA_02.tif





1 μ m
┌───┐

Mag = 3.60 K X

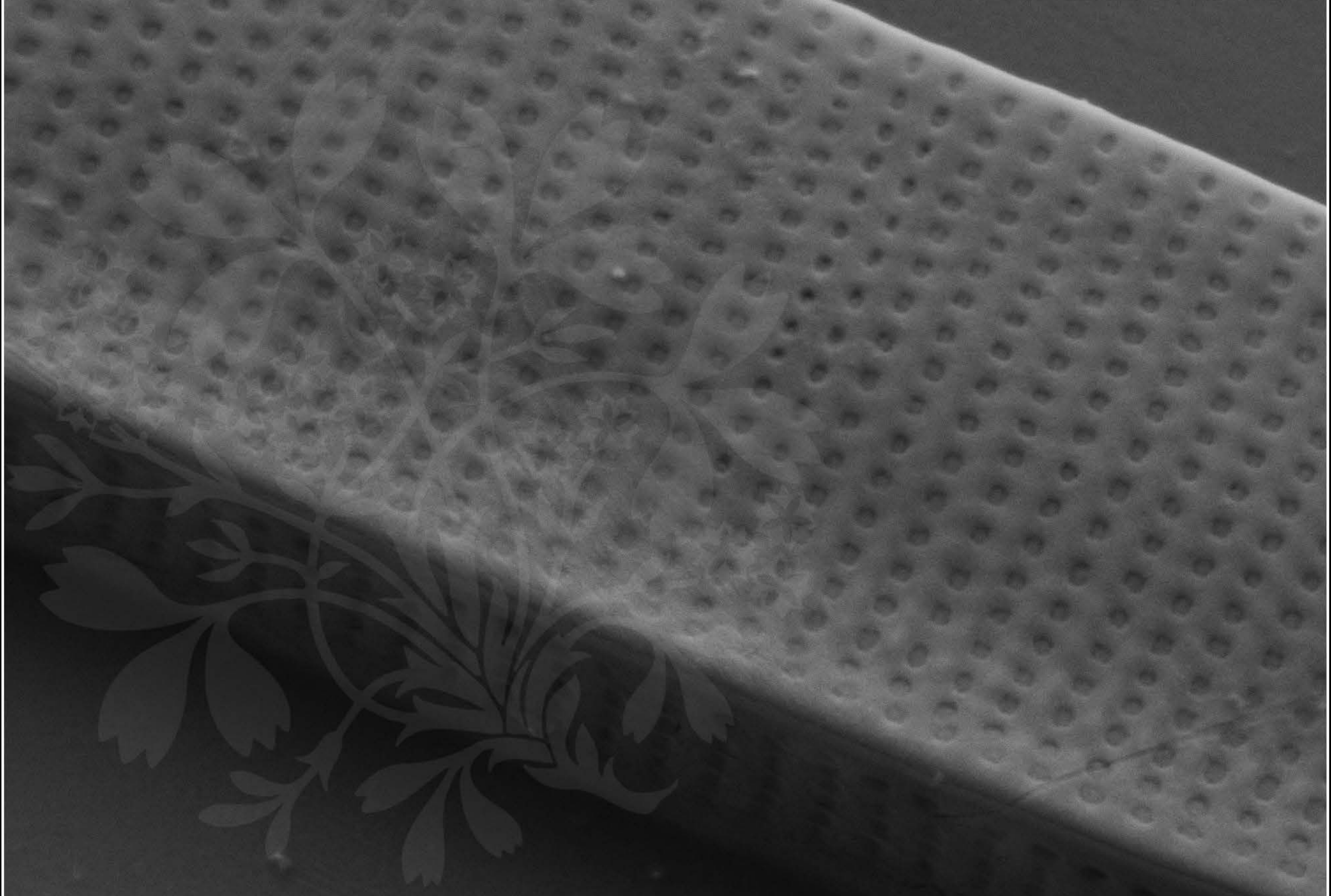
EHT = 5.00 kV

Signal A = SE2 Date : 19 Feb 2020

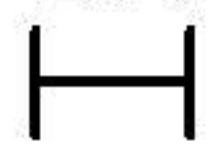
WD = 4.5 mm

File Name = SriLankaA_03.tif





200 nm



Mag = 16.00 K X

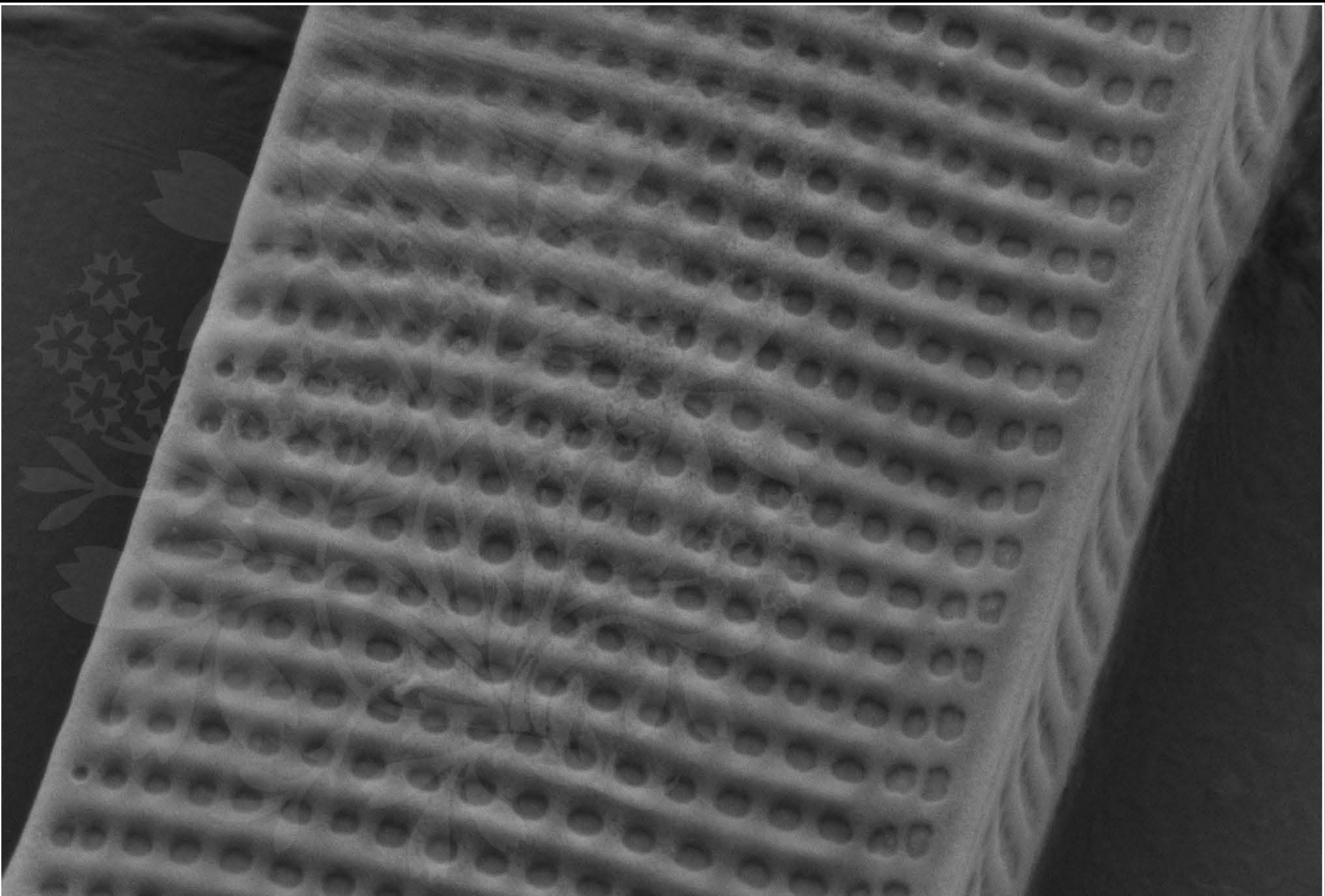
EHT = 5.00 kV

Signal A = SE2 Date : 19 Feb 2020

WD = 4.5 mm

File Name = SriLankaA_04.tif





200 nm



Mag = 20.00 K X

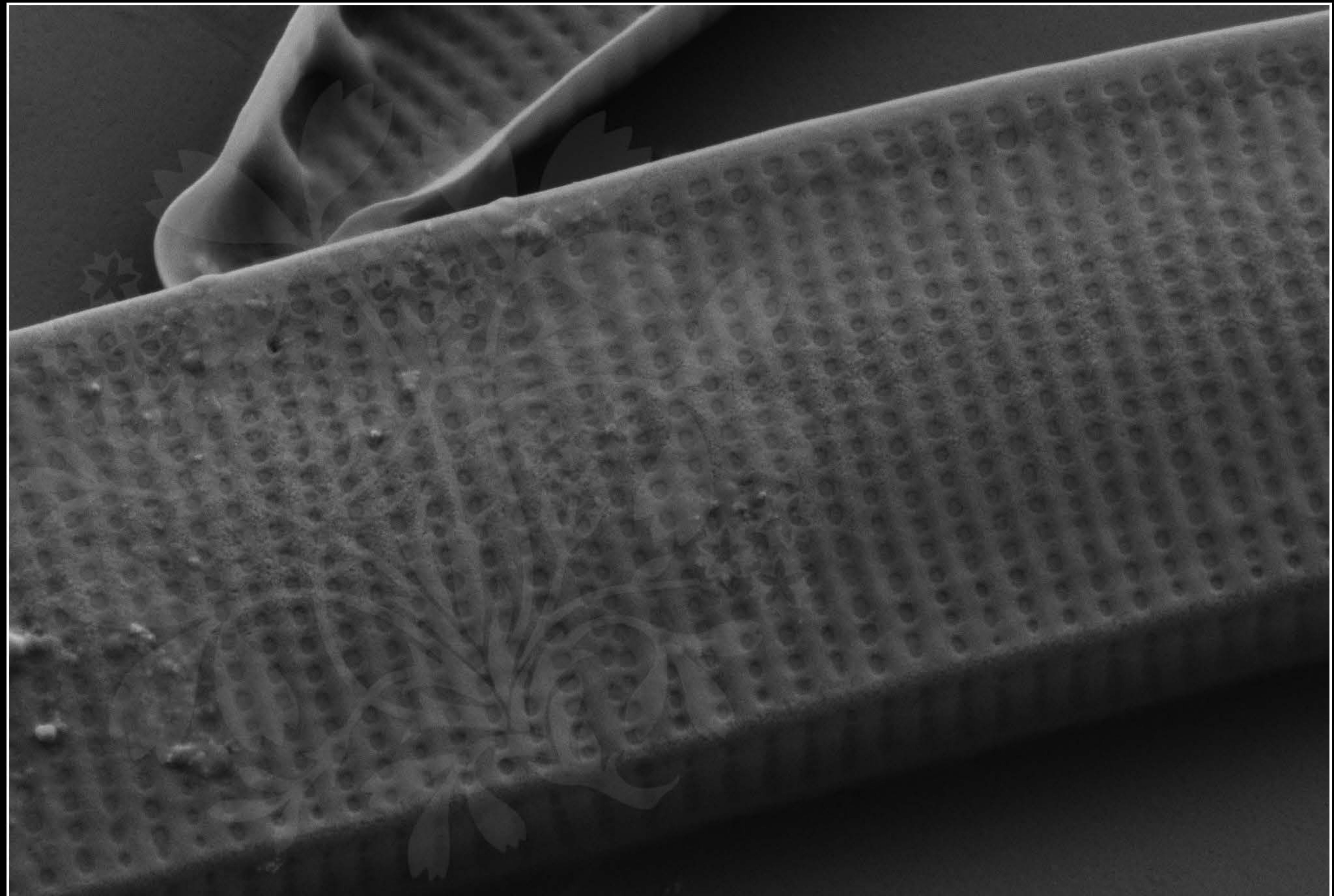
EHT = 5.00 kV

Signal A = SE2 Date : 19 Feb 2020

WD = 4.5 mm

File Name = SriLankaA_05.tif





200 nm



Mag = 12.00 K X

EHT = 5.00 kV

Signal A = SE2 Date : 19 Feb 2020

WD = 4.5 mm

File Name = SriLankaA_06.tif

