

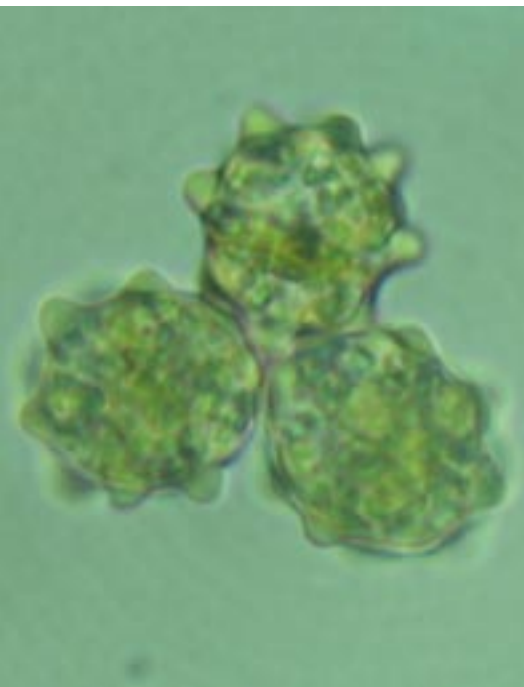
Mark Hill presents the seventh installment in his occasional column, *Rare and interesting bryophytes in Britain and Ireland*.

Categories of interesting record

A, Altitude; **D**, dispersing; **F**, fruiting; **G**, gametangia; **H**, habitat; **N**, nationally rare; **P**, previously under-recorded; **R**, regionally rare; **S**, status report; **V**, vegetatively reproducing. For a fuller explanation of the categories refer to Hill. (2006).

Reference

Hill, M.O. (2006). Rare and interesting bryophytes in Britain and Ireland. *Field Bryology* 89, 43–45.



△ Fig. 1. Gemmae of *Cephaloziella dentata* from the Lizard. David Holyoak

LIVERWORTS

18.10. *Cephaloziella dentata*. 1: On unshaded damp soil with sparse low vegetation in hollow among serpentinite rocks on heath, 100 m alt., west of Rosuick, east side of Lizard peninsula, SW7420, March 2004, Holyoak 04-23. With gemmae (Fig. 1). Refound in very small quantity at same site in September 2004 by Blockeel, Holyoak & Paton. All previous British records were from the western part of the Lizard peninsula, where it was last seen by Mrs J.A. Paton in 1968 (specimen at E); all attempts to refind it on the western Lizard since then have been unsuccessful. **N**.

62.3. *Cololejeunea minutissima*. 20: Leaning trunk of a small (girth ca 40 cm) smooth-barked Ash within narrow woodland belt on exposed south-west-facing hillside, 180 m alt., Northchurch Common, Ashridge NT Estate, SP971111, 2006, Tipper. Second record for the county of a species that appears to be spreading in eastern England. **D,R**.

62.3. *Cololejeunea minutissima*. 57: On bark of elder on sheltered bank, 85 m alt., Calke Park, Ticknall, SK367229, 2007, Blockeel. Small quantity c.per. Second record for Derbyshire, the locality being in the south east of the county near the border with Leicestershire. The previous record, made in 2006, was at the opposite end of the county, in the far north west in Longdendale. Even 10 or 20 years ago, the possibility of this species occurring in the East Midlands of England would have been almost unthinkable. **D,R**.

64.9. *Fossombronia incurva*. 40: On damp mud at upper end of drawdown zone of pool, 110 m alt., Brown Moss, near Ash Magna, SJ563394, 2006, Godfrey. Second county record of this nationally scarce species. Clearly dioicous, both male and female collected, and plants grown on to examine spores, which ripened after a month in cultivation. **N**.

83.1. *Ricciocarpos natans*. 29: Field drains with *Riccia fluitans*, *Lemna minor*, *L. trisulca*, *Myriophyllum verticillatum* and *Potamogeton natans*, 0 m alt., north of Ramsey Mereside, TL280905, 2006, Graham & Mountford. Third recent locality for Cambridgeshire. Dominant over about 1 km length of one drain. **R**.

MOSESSES

1.2. *Sphagnum affine*. 70: Frequent on edge of drainage channels, 360 m alt., beneath Cam Spout Crags, west of River Esk, Scafell, NY218052, 2007, Cameron, conf. Hill. Second record for Cumberland since 1961. An unusual form, with dense habit and dark colour (Fig. 2), and with branches in fascicles of 3; but microscopic characters support *S. affine*, and another lax specimen from nearby had 3–4 branches per fascicle. **R**.

1.28. *Sphagnum balticum*. 92: Edge of pool, in carpet of *S. capillifolium* with *S. magellanicum* close by, 650 m alt., Black Burn headwaters, near Loch Muick, NO27598129, 2007, Payne. First record at this locality since 1957, but it is now very rare at the site, as it had been sought on an earlier occasion and not found. **S**.

25.5. *Dicranella subulata*. 57: On gritty soil on steep exposed bank, with *Ditrichum heteromallum*, 310 m alt., Torside Clough, Longdendale, SK0697, 2007, Blockeel & North-Western Naturalists Union. Capsules present. Second record for the county and the first since 1986. **R**.

29.1. *Dicranum polysetum*. 63: Colliery spoil, lightly wooded, 60 m alt., Cortonwood Pit, Brampton, SE4000, 2007, Lake, comm. Blockeel. One of several interesting recent records from old pit spoil in South Yorkshire, and the second record of this species from the vice-county. **R**.

34.4. *Fissidens pusillus*. 16: On sandstone in ghyll stream, 50 m alt., Avery's Wood, near Speldhurst, TQ542410, 2007, Streeter, conf. Matcham. Second record for vice-county since 1950. **R**.

37.1. *Eucladium verticillatum*. 17: On soil in calcareous grassland on south-east-facing slope, 120 m alt., below Pickett's Hole, TQ123492, 2007, Wallis, conf. Rothero. Second Surrey record since 1950. **R**.

54.1. *Didymodon acutus*. 17: On bare soil in calcareous grassland, 115 m alt., bottom of Mount Hill, near Buckland, TQ233523, 2007, Wallis. New locality for a species with only one other recent Surrey station. **R**.

54.3. *Didymodon rigidulus*. H1: On unshaded surface of sandstone block in east-facing boulder scree, 1,034 m alt., ca 30 m east of summit of Carrauntoohil, V80388442, 2006, Holyoak 06-312. With male inflorescences. At considerably higher elevation than the 750 m (Knock Ore Gill) in the Atlas. **A**.

55.1. *Scopelophila cataractae*. 41: On dryish flakes of metal-toxic spoil among dense *Weissia controversa* var *densifolia*, 20 m alt., between the railway lines south of Atlantic Close, Llansamlet, Swansea, SS67519609 and SS67509607, 2007, Bosanquet. Two tufts only, the first record since 1983 at the site where it had been discovered new to Europe in 1969 by Martin Corley and Roy Perry. **S**.

58.2. *Aloina rigida*. 29: On disturbed chalk soil in actively worked chalk quarry, with *A. ambigua* and *Barbula unguiculata*, 30 m alt., east side of Barrington Cement Works, TL3950, 2006, Preston & Hill. First record for the county since 1989. **R**.

65.8. *Syntrichia papillosa*. 17: Epiphytic on *Sambucus nigra*, 150 m alt., Headley Heath, TQ196535, 2006, Wallis, conf. Rothero. Second recent record for the county of a species that appears to be spreading in eastern England. **D**.

65.9. *Syntrichia latifolia*. H12: On old straw-thatch on west-facing roof of cottage, 15 m alt., Blackwater, by main R742 road, T12393401, 2007, Holyoak 07-458A. The species occurs mainly in waterside habitats and it has apparently not been reported previously from thatched roofs. The presence



△ Fig. 2. *Sphagnum affine* in Cumberland; deceptive form resembling *S. austini*. Fiona Cameron



△ Fig. 3. *Syntrichia latifolia* growing on thatched roof in Co. Wexford. David Holyoak

Contributors of records and people who have checked them

T.L. Blockeel, F. Cameron, B. Edwards, R.J. Fisk, M. Godfrey, J.J. Graham, M.O. Hill, D.T. Holyoak, H. Lake, H.W. Matcham, J.O. Mountford, A.G. Payne, C.D. Preston, G.P. Rothero, C.R. Stevenson, D.T. Streeter, C.T.W. Tipper, H.W. Wallis.

M.O. Hill

CEH Monks Wood, Abbots Ripton, Huntingdon, Cambs PE28 2LS
(e moh@ceh.ac.uk)

of a single very young sporophyte is also noteworthy as this species rarely has capsules. **F,H.**

65.9. *Syntrichia latifolia*. H22: On old mossy straw-thatch low on roof (Fig. 3), 15 m alt., west side of Julianstown Inn, Julianstown, O13407052, 2007, Holyoak 07-414B. Another record from a thatched roof in eastern Ireland. **H.**

67.1. *Coscinodon cribrosus*. 57: On somewhat shaded, rotten shale on bank by stream, 300 m alt., by R. Dove, 0.9 km west of Glutton Bridge, SK075668, 2006, Blockeel 35/271. Second record for the county of a species unknown in central England before 2006. The plants covered a small area of acid shale on a steep bank by the infant river; they were uniformly small in stature and sterile. **R.**

76.1. *Brachydontium trichodes*. 17: On sandstone outcrop on the edge of an old quarry, 235 m alt., north end of Pitch Hill, TQ080426, 2007, Wallis. First record for Surrey since 1979, now refound at a former site. **S.**

83.1. *Ephemerum recurvifolium*. 17: On soil in calcareous grassland, 115 m alt., base of Mount Hill, near Buckland, TQ231523, 2007, Wallis. New locality for a species with few Surrey records post 1980. **P.**

83.1. *Ephemerum recurvifolium*. 17: On soil near footpath, 150 m alt., Dawcombe LNR, near Buckland, TQ215526, 2006, Wallis. New locality for a species with few Surrey records post 1980. **P.**

83.1. *Ephemerum recurvifolium*. 13: On soil in wet pasture, 70 m alt., above Sompting Abbots, TQ160059, 2006, Wallis, conf. Matcham. Second record for vice-county since 1950. **P.**

117.1. *Orthotrichum lyellii*. 25: On felt covered flat roof of lean-to store attached to village hall, with *Bryum argenteum*, *Grimmia pulvinata*, *Orthotrichum cupulatum* and *O. diaphanum*, 15 m alt., Hemley, TM285423, 2007, Fisk. Several large tufts, up to 5 cm diameter, of a species that is normally epiphytic. **H.**

117.2. *Orthotrichum striatum*. 29: On 100-year old Bramley Apple tree in orchard, 2 m alt., Popple Drove, Leverington, TF40890891, 2006, Stevenson. Second record for the county and first since 1995. **R.**

118.5. *Ulota calvescens*. 1: About 1.5 m above ground on bark of branch of *Salix cinerea* bush in partly cleared area, 62 m alt., ca 1 km north-west of Lamorna, north of Boleigh Farm, SW43772509, 2006, Holyoak 06-04. c.fr. The second record in West Cornwall (and second record in England), again apparently of a single tuft. **R.**

127.1. *Leptodon smithii*. 9: On old *Fraxinus excelsior*, 45 m alt., Oakers Wood, Affpuddle, SY8191, 2007, Edwards. Capsules ripe on 16 March. *Leptodon* is frequent in Dorset but has not been found fruiting in the county since 1952. **F.**

174.3. *Rhynchostegiella curviseta*. 17: On a high wet bank beside descending chalky path, 180 m alt., North Downs between Buckland and the M25, TQ219526, 2006, Wallis. Second Surrey record since 1950. **R.**