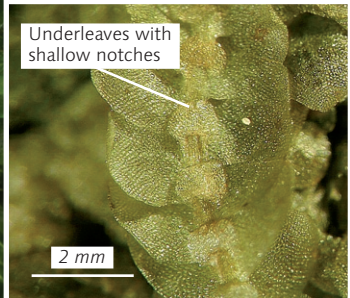
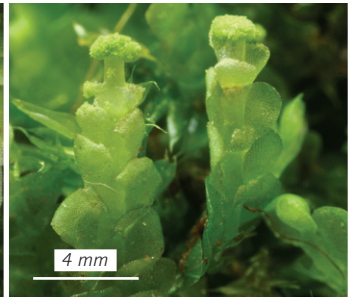
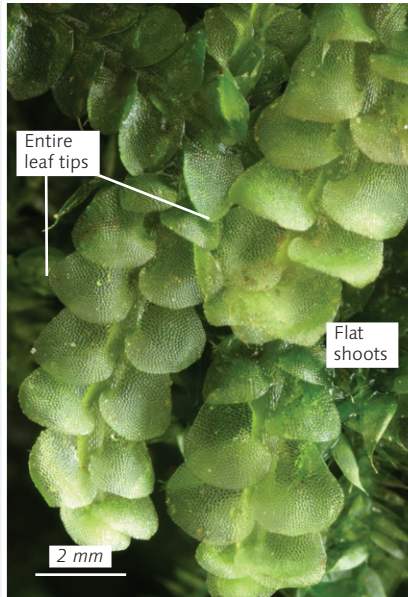
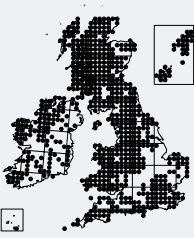


Calypogeia muelleriana

Mueller's Pouchwort

Key 67



Identification This is generally the least frequent of the three common *Calypogeia* species, because of its more demanding habitat requirements. It looks similar to *C. fissa*, albeit often more grey-blue, but has broadly rounded, entire leaf tips, and underleaves with shallow notches and no side lobes. Gemmae are often abundant. Shoots are typically 1.5–3.5 mm wide, and leaves a little under 2 mm long and wide.

Similar species *C. muelleriana* can be confused with *C. fissa* (p. 85), as some plants are rather intermediate, but almost all apparent intermediates can be named with care. *C. muelleriana* has rounded leaf tips that almost never end with a notch and are only rarely bluntly pointed like those of *C. fissa*; more importantly, the underleaves of *C. muelleriana* are shallowly notched and have no extra lobe on their sides. The underleaves of *C. muelleriana* can look almost unnotched and may therefore resemble those of *C. neesiana* and *C. integristipula* (p. 88), but the shoots of both those species are visibly more opaque, with translucent leaf borders. *C. azurea* (p. 87) has vivid blue oil bodies.

Habitat *C. muelleriana* avoids calcareous substrates. It is found most frequently on peat, and more rarely on mineral soil or clay. It grows in woodlands, especially conifer plantations, on peatlands, bogs and heaths, particularly in the mountains. *C. muelleriana* shuns the really wet places where *C. fissa* may grow, such as bog pools.