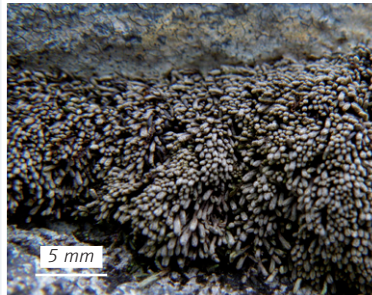
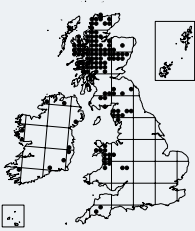


Gymnomitrium obtusum

White Frostwort



Identification Shoots usually forming dense cushions, but may be more scattered and prostrate. They are grey-green, but can become whitish-grey when dry, and shoots grow to 15 mm long and 0.25–0.5 mm wide. They are round in cross-section, with densely appressed and overlapping leaves that are less than 1 mm long. The short notch is acute and closed at the base, and the lobes are rounded.

Similar species The distinctively closed notch and blunt lobes of the leaves are visible with a hand lens, but some plants can be difficult to distinguish from forms of *G. concinatum* (p. 162).

Habitat *G. obtusum* grows on the surface of sheltered rock faces in scree, on crags and on large boulders, and only very rarely on soil. It is most frequent on acidic rocks, but can tolerate quite base-rich conditions and descends to much lower ground than *G. concinatum*, particularly in oceanic conditions.