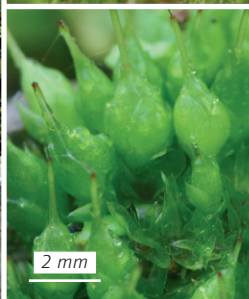
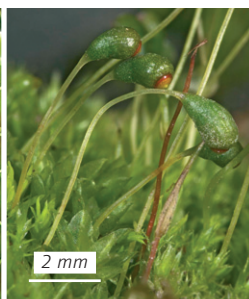
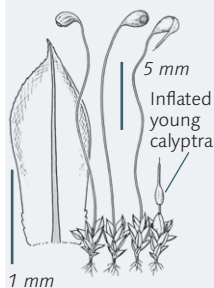
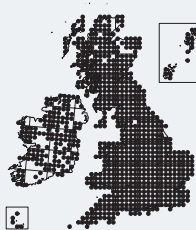


Funaria hygrometrica

Bonfire-moss

Key 170, 176



Identification

This is a common plant in lowland Britain and is one that beginners will soon learn to recognize. The short (3–10 mm) shoots of this moss form loose carpets. The egg-shaped leaves vary in size (2–4 mm long) and are translucent, with very large, lax cells, easily seen with a 10 hand lens. Asymmetrical capsules are usually present in abundance, borne on a long (3–5 cm), swan-neck seta, with a large, delicate calyptra and a convex lid.

Similar species

Unmistakable when setae and capsules are present. Species of *Entosthodon* (pp. 562–564) and *Physcomitrium* (pp. 565–566) also have lax-celled leaves, but a much shorter, straighter seta. Species of *Bryum* (pp. 581–599) and related genera have large cells, but not as large and lax as those of *Funaria*.

Habitat

This weedy species is a colonist of bare, disturbed, nutrient-rich soils; it is particularly characteristic of old bonfire sites.