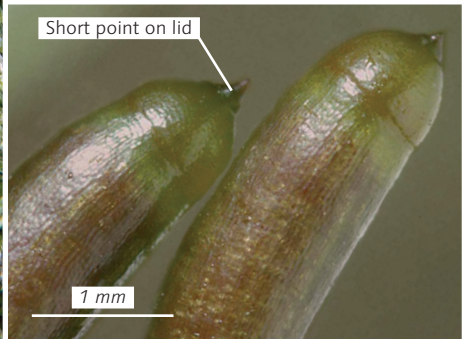
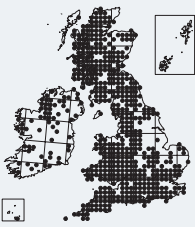


*Hypnum andoi**H. mammillatum*

Mamillate Plait-moss

Key 301



Identification

This is the commonest *Hypnum* on rock and bark in many upland districts of Britain. The leaves vary from 0.75 to about 1.75 mm in length, are strongly curved towards the underside of the shoot, and gradually taper to a fine point. Shoots are irregularly branched, and yellow-green to dull green, without any trace of the warm, golden brown tints sometimes found in *H. cupressiforme* and which are often conspicuous in *H. lacunosum*. The shoots can be medium-sized (up to about 1.5 mm wide), but are frequently slender, especially when growing on steep surfaces. The shortly pointed capsule lid is the most reliable feature for distinguishing this from similar species of *Hypnum*, but when capsules are absent or the lids have fallen, microscopical examination may be necessary to confirm identification. Capsule lids may look more pointed when dry than when moist. The capsules are 2.5–3 mm long.

Similar species

Other species of *Hypnum* have a beaked capsule lid. The shoots of *H. cupressiforme* (p. 802) are similar, but often more robust (there is a large overlap in size) and sometimes tinged yellow-brown. The shoots of *H. andoi* are duller than those of *H. cupressiforme*, especially when dry. *H. jutlandicum* (p. 806) is pale green and more or less pinnately branched.

Habitat

Locally abundant on acidic bark and rock, and more or less dominant in woodland in upland districts, often on bark apparently too acidic for the other frequently dominant moss of this habitat, *Isoetes myosuroides*. Occasionally forming a cap to large boulders in treeless upland sites, but generally decreasing rapidly in abundance away from the shade and shelter of woodland.